

craft33[®]

ESSENTIAL
COLLECTION

NEW COLLECTION!



Making a difference in our local communities

T GETHER



A portion of every 33Brands purchase is donated to our community Foodbanks, local children's charities, and neighborhood Habitat for Humanity ReStores through in-kind donations.



Scan the QR code or visit craft33products.com/giving-back/ to learn more.

ESSENTIAL COLLECTION

Craft33® Essential Collection thoughtfully combines timeless design with a modest price point. Cabinetry doors are available in sleek, minimalist modern slab or elegant, classic shaker styles, both offering versatile finishes to complement any decor. DuraGuard™ laminate preserves their stunning look and feel over time, while soft-close hinges add a touch of luxury. Our superior cabinetry is priced right for every budget without compromising on style or performance.





Slab Sandstone + White

CONTENTS

<p>7 Door Styles</p> <p>8 Construction</p> <p>10 Wall Cabinets</p> <p>14 Base Cabinets</p> <p>17 Tall Cabinets</p> <p>19 Vanity Cabinets</p>	<p>21 Universal Design Cabinets</p> <p>23 Molds & Trim</p> <p>24 Fillers & Panels</p> <p>26 Accessories</p> <p>27 Warranty</p>
--	---



Slab Charcoal



Slab Sandstone



Shaker Dark Grey



Slab Fog



Shaker Light Grey

DOOR STYLES

SLAB



White Light Grey Dark Grey Sandstone Bark Fog Charcoal

SHAKER



White Light Grey Dark Grey

Door swatches are provided in this catalog to give the most accurate color representation possible, but are not guaranteed to be an exact color match of the actual cabinet finish. Before ordering your cabinets, we strongly recommend contacting Craft33 for a door sample or color chip to view the actual color.

PEACE OF MIND WITH DURAGUARD™ CABINET PROTECTION



Our cabinets are built to last. All of our door and drawer fronts are 360° wrapped with our long-lasting DuraGuard™ laminate, providing a durable layer that protects against stains and damage caused by daily use. Plus, its electron beam cured coatings are engineered to exceed KCMA stain test standards—which preserves the beauty of your cabinet finishes for longer.

RESPONSIBLE, ECO-CONSCIOUS CRAFTSMANSHIP

CARB CERTIFIED

Craft33 is proud to be a CARB Certified kitchen cabinet manufacturer. Our cabinets comply with the rules and regulations of composite wood products by the California Code of Regulations.

KCMA QUALITY TESTED

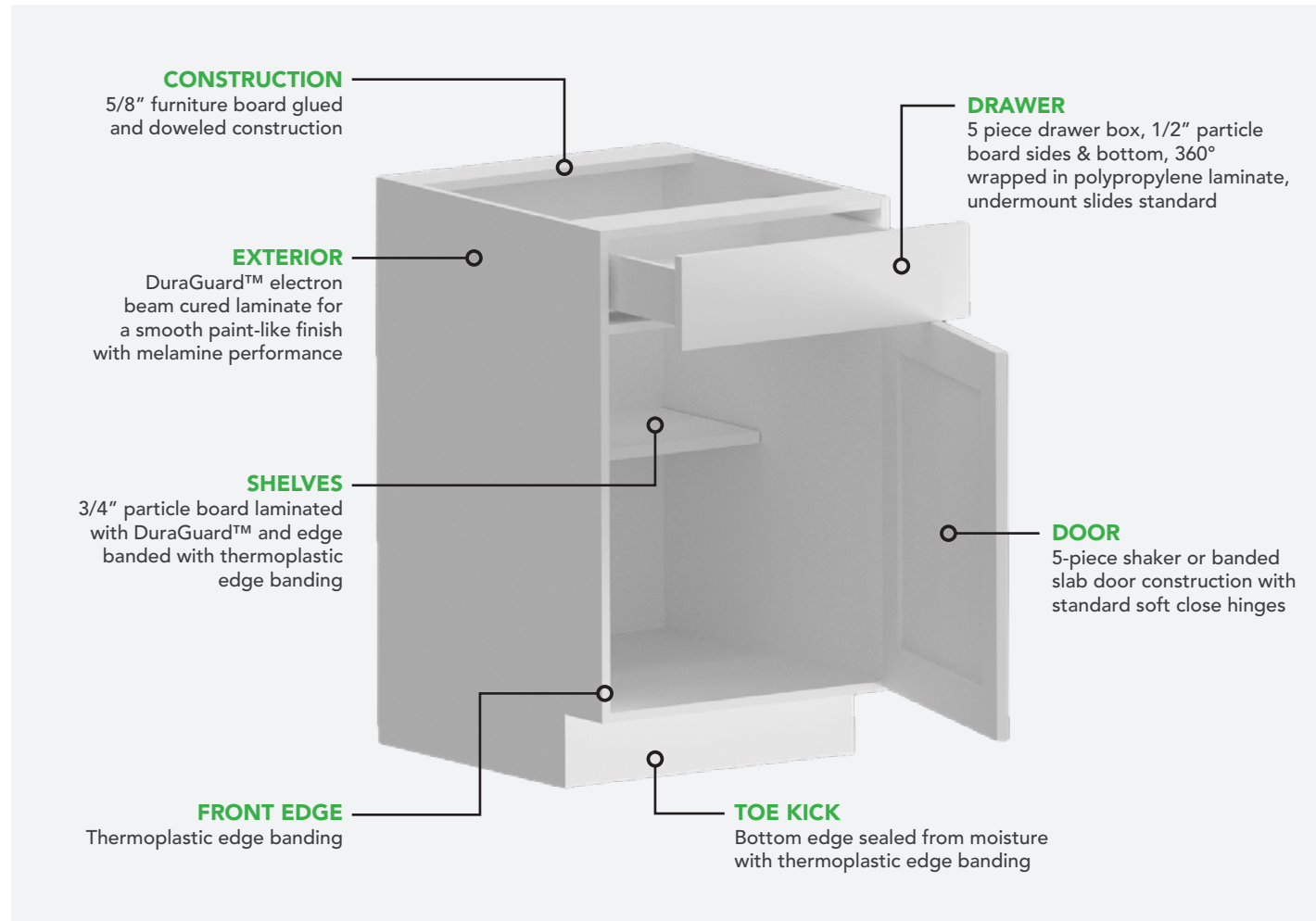
At Craft33, we support and encourage responsible forest management practices that promote sustainability and result in long-term economic and environmental benefits. The KCMA Environmental Stewardship Certification proves our commitment to the intelligent use of our natural resources.

KCMA ESP CERTIFIED

KCMA does your homework for you. Our cabinets passed the toughest tests of durability and performance in the marketplace today and have earned the prestigious KCMA Certification Seal.

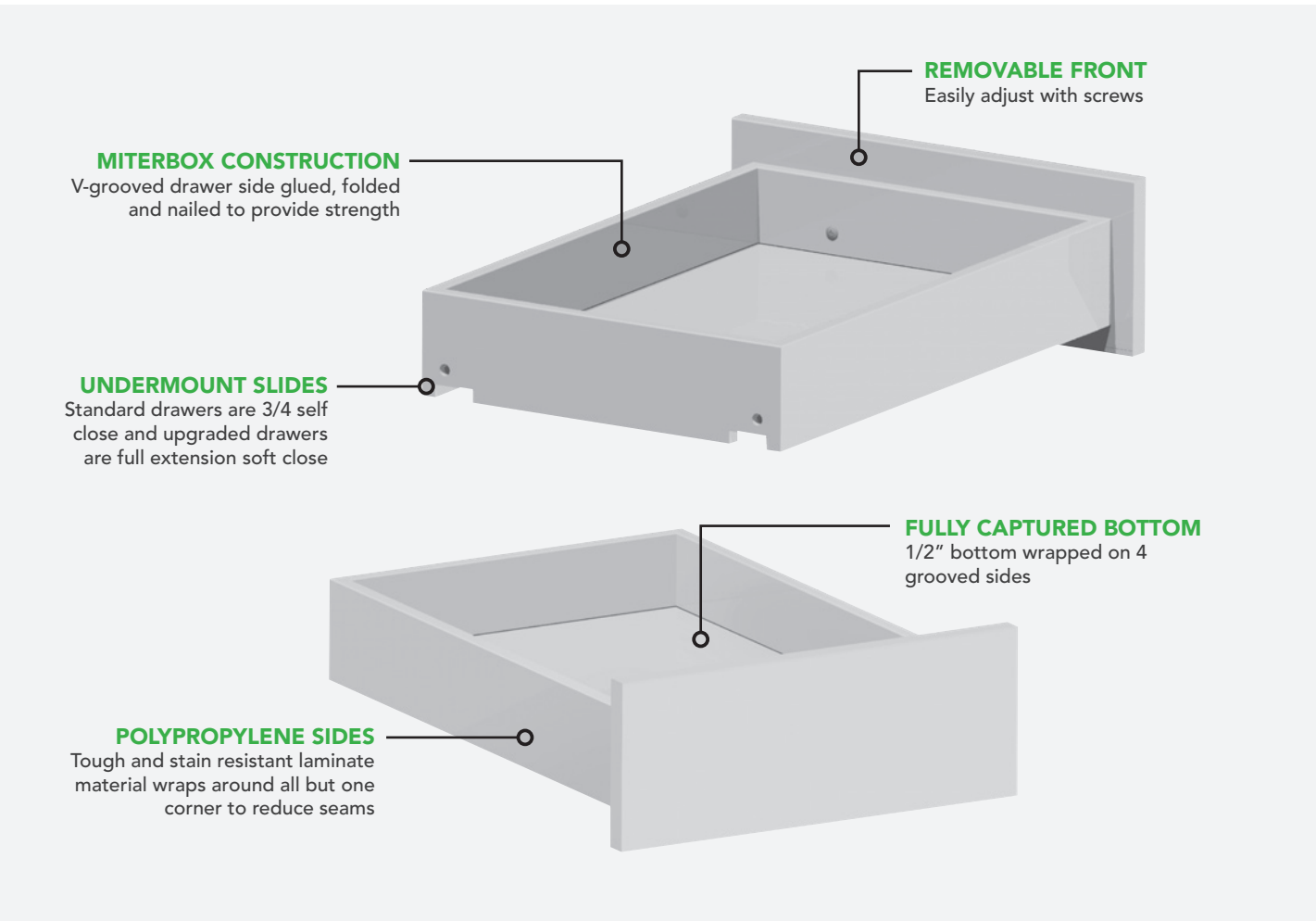


Shaker Door Style	●	●
Slab Door Style		●



CABINET CONSTRUCTION		
	SLAB	SHAKER
Back	5/8" furniture board; DuraGuard™ laminate	
Side Panels	5/8" furniture board; DuraGuard™ laminate exterior*; front edge color matched to door*; white interior	5/8" furniture board; DuraGuard™ laminate exterior matched to door; front edge color matched to door; white interior
Top/Bottom	5/8" furniture board; DuraGuard™ laminate exterior*; front edge color matched to door*; white interior	5/8" furniture board; DuraGuard™ laminate exterior; front edge color matched to door; white interior
Stretcher	5/8" furniture board; DuraGuard™ laminate	
Toe Kick	5/8" furniture board; DuraGuard™ laminate	
Shelves	Half depth adjustable 3/4" furniture board, DuraGuard™ laminate	
Hinges	6 way adjustable, fully concealed soft close steel hinges	
Interior	White DuraGuard™ laminate finish	
End Panels	—	1/2" thick furniture board, DuraGuard™ double sided and laminate with color matched 4 side plastic edgeband

* White, Light Grey, and Dark Grey panels are color matched; all other colors are white.



DRAWER CONSTRUCTION		
	STANDARD	UPGRADE
Guides	Self close, 3/4" extension, undermount, 75 lb rating	Soft close, full extension, undermount, 100 lb rating
Sides	1/2" furniture board; polypropylene laminate, miterfold	
Bottom	1/2" furniture board; polypropylene laminate, captured in a groove, glued from underneath	
Back	1/2" furniture board, polypropylene laminate, miterfold	
Front	Separate, attached with wafer screws	
Adjustment	Adjustable via wafer screws	

Due to continuous product improvements, specifications may change without notice.

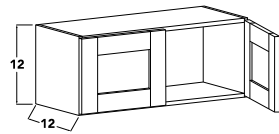
Wall Cabinet Nomenclature



*When a cabinet is shorter or deeper than the standard depth, it is always represented by a third set of numbers.

- Notes:
- Standard wall cabinets are 12" D unless otherwise noted. Refrigerator cabinets are 24" D unless otherwise noted.
 - Single door wall cabinetry can be reversed in the field for L/R application.

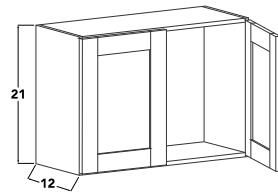
Wall Double Door, 12" High



Model	Outer Size		
	W	H	D
W2112 [^]	21	12	12
W2412	24	12	12
W3012	30	12	12
W3312	33	12	12
W3612	36	12	12
W3912	39	12	12

- No shelf
- [^] Has 1 door

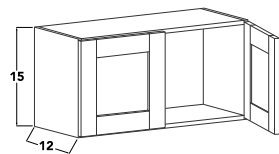
Wall Double Door, 21" High



Model	Outer Size		
	W	H	D
W2121 [^]	21	21	12
W3021	30	21	12
W3321	33	21	12
W3621	36	21	12
W3921	39	21	12

- No shelf
- [^] Has 1 door

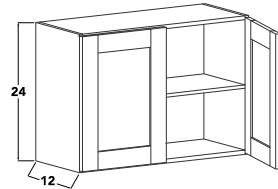
Wall Double Door, 15" High



Model	Outer Size		
	W	H	D
W2115 [^]	21	15	12
W3015	30	15	12
W3315	33	15	12
W3615	36	15	12
W3915	39	15	12

- No shelf
- [^] Has 1 door

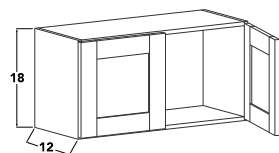
Wall Double Door, 24" High



Model	Outer Size		
	W	H	D
W2124 [^]	21	24	12
W2424	24	24	12
W3024	30	24	12
W3324	33	24	12
W3624	36	24	12
W3924	39	24	12

- Includes 1 adjustable shelf
- [^] Has 1 door

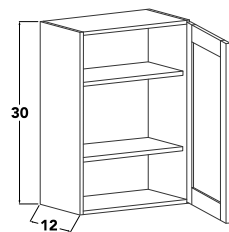
Wall Double Door, 18" High



Model	Outer Size		
	W	H	D
W2118 [^]	21	18	12
W2418	24	18	12
W3018	30	18	12
W3318	33	18	12
W3618	36	18	12
W3918	39	18	12

- No shelf
- [^] Has 1 door

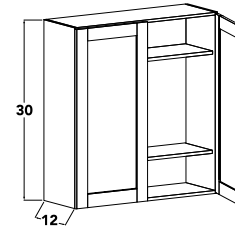
Wall Single Door, 30" High



Model	Outer Size		
	W	H	D
W0930	9	30	12
W1230	12	30	12
W1530	15	30	12
W1830	18	30	12
W2130	21	30	12

- Includes 2 adjustable shelves
- Door can be reversed in field by flipping cabinet

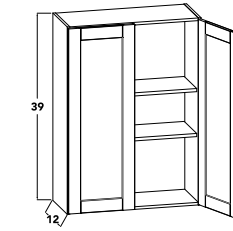
Wall Double Door, 30" High



Model	Outer Size		
	W	H	D
W2430	24	30	12
W2730	27	30	12
W3030	30	30	12
W3330	33	30	12
W3630	36	30	12
W3930 [^]	39	30	12
W4230 [^]	42	30	12

- Includes 2 adjustable shelves
- [^] Has center stile

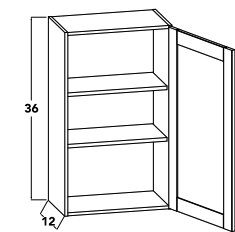
Wall Double Door, 39" High



Model	Outer Size		
	W	H	D
W2439	24	39	12
W2739	27	39	12
W3039	30	39	12
W3339	33	39	12
W3639	36	39	12
W3939 [^]	39	39	12
W4239 [^]	42	39	12

- Includes 2 adjustable shelves
- [^] Has center stile

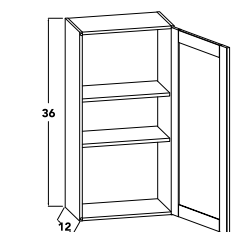
Wall Single Door, 36" High



Model	Outer Size		
	W	H	D
W0936	9	36	12
W1236	12	36	12
W1536	15	36	12
W1836	18	36	12
W2136	21	36	12

- Includes 2 adjustable shelves
- Door can be reversed in field by flipping cabinet

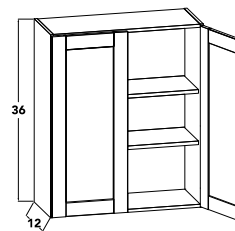
Wall Single Door, 42" High



Model	Outer Size		
	W	H	D
W0942	9	42	12
W1242	12	42	12
W1542	15	42	12
W1842	18	42	12
W2142	21	42	12

- Includes 2 adjustable shelves
- Door can be reversed in field by flipping cabinet

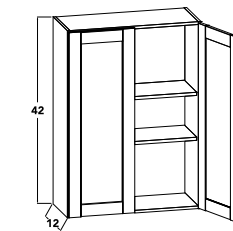
Wall Double Door, 36" High



Model	Outer Size		
	W	H	D
W2436	24	36	12
W2736	27	36	12
W3036	30	36	12
W3336	33	36	12
W3636	36	36	12
W3936 [^]	39	36	12
W4236 [^]	42	36	12

- Includes 2 adjustable shelves
- [^] Has center stile

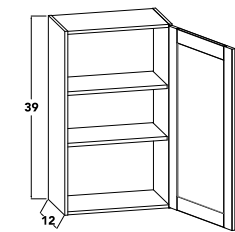
Wall Double Door, 42" High



Model	Outer Size		
	W	H	D
W2442	24	42	12
W2742	27	42	12
W3042	30	42	12
W3342	33	42	12
W3642	36	42	12
W3942 [^]	39	42	12
W4242 [^]	42	42	12

- Includes 2 adjustable shelves
- [^] Has center stile

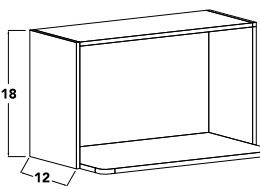
Wall Single Door, 39" High



Model	Outer Size		
	W	H	D
W0939	9	39	12
W1239	12	39	12
W1539	15	39	12
W1839	18	39	12
W2139	21	39	12

- Includes 2 adjustable shelves
- Door can be reversed in field by flipping cabinet

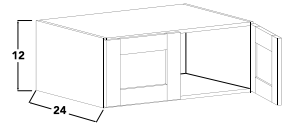
Wall Microwave Cabinet



Model	Outer Size		
	W	H	D
MWC3018	30	18	12

- Bottom shelf is 18" D
- Opening is 28-1/2" W x 16-1/2" H
- Interior finished to match exterior

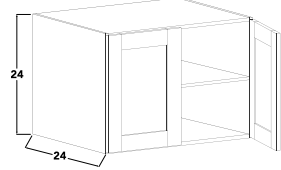
Refrigerator Wall, 12" High



Model	Outer Size		
	W	H	D
W301224	30	12	24
W331224	33	12	24
W361224	36	12	24
W391224	39	12	24

- No shelf

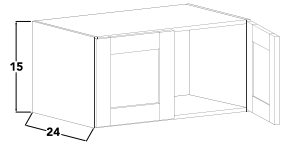
Refrigerator Wall, 24" High



Model	Outer Size		
	W	H	D
W302424	30	24	24
W332424	33	24	24
W362424	36	24	24
W392424	39	24	24

- Includes 1 adjustable shelf

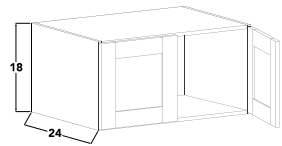
Refrigerator Wall, 15" High



Model	Outer Size		
	W	H	D
W301524	30	15	24
W331524	33	15	24
W361524	36	15	24
W391524	39	15	24

- No shelf

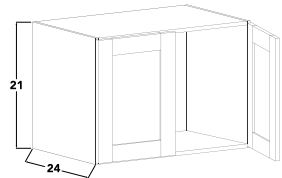
Refrigerator Wall, 18" High



Model	Outer Size		
	W	H	D
W301824	30	18	24
W331824	33	18	24
W361824	36	18	24
W391824	39	18	24

- No shelf

Refrigerator Wall, 21" High

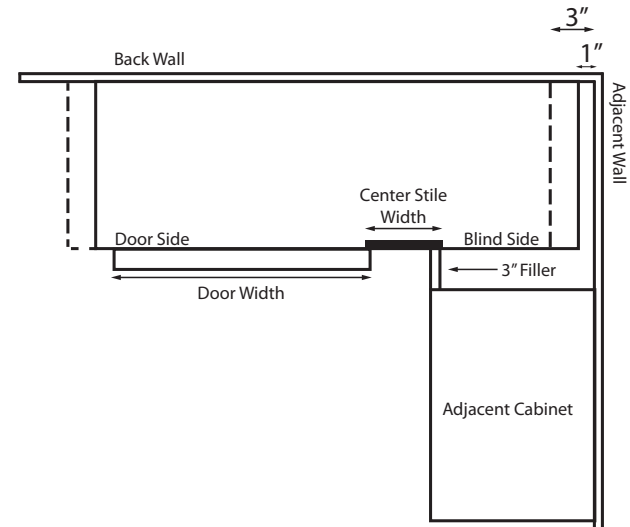


Model	Outer Size		
	W	H	D
W302124	30	21	24
W332124	33	21	24
W362124	36	21	24
W392124	39	21	24

- No shelf

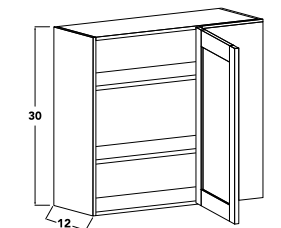
Installing a Wall Blind Cabinet

Proper installation ensures that the doors will open & show correct reveal



- Cabinet can be flipped in field to determine blind side
- Place a 3" filler next to the adjacent cabinet (not included)

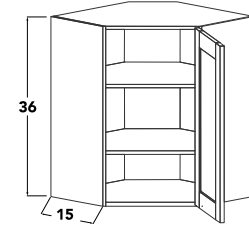
30" - 42" High Wall Blind Cabinet



Model	Outer Size			Pull to Fit Wall Space
	W	H	D	
WBC3330	30	30	12	34-44
WBC3630	33	30	12	37-47
WBC3336	30	36	12	34-44
WBC3636	33	36	12	37-47
WBC3339	30	39	12	34-44
WBC3639	33	39	12	37-47
WBC3342	30	42	12	34-44
WBC3642	33	42	12	37-47

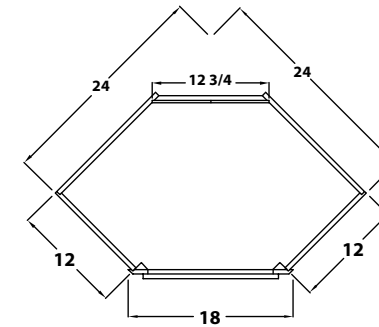
- Includes 2 adjustable shelves
- Blind can be reversed in field by flipping cabinet
- 3" Filler required (not included) for adjacent cabinet

Wall Diagonal Cabinet, 24" Wide

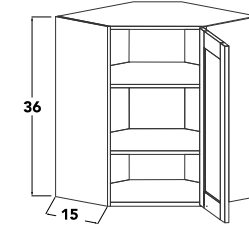


Model	Outer Size		
	W	H	D
WDC2430	24	30	12
WDC2436	24	36	12
WDC2439	24	39	12
WDC2442	24	42	12

- Includes 2 adjustable shelves
- Door can be reversed in field by flipping cabinet

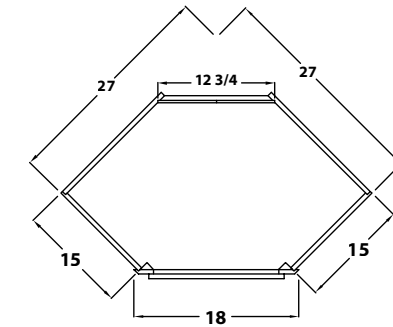


Wall Diagonal Cabinet, 27" Wide

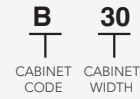


Model	Outer Size		
	W	H	D
15" DEPTH			
WDC2730	27	30	15
WDC2736	27	36	15
WDC2739	27	39	15
WDC2742	27	42	15

- Includes 2 adjustable shelves
- Door can be reversed in field by flipping cabinet



Base Cabinet Nomenclature

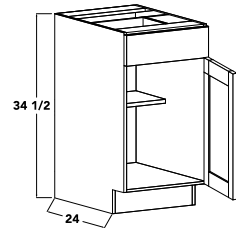


Notes:

- Standard base cabinets are 24" D & 34.5" H.
- Add door thickness for total cabinet depth.

*When a cabinet is shorter or deeper than the standard depth, it is always represented by a third set of numbers.

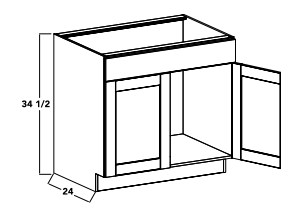
Base Single Door



Model	Outer Size		
	W	H	D
B12	12	34.5	24
B15	15	34.5	24
B18	18	34.5	24
B21	21	34.5	24

- Includes 1 adjustable shelf
- Door can be reversed in field
- Soft close available

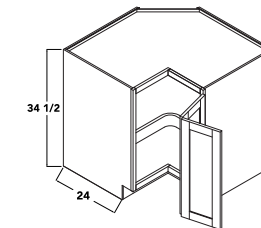
Sink Base



Model	Outer Size		
	W	H	D
SB24	24	34.5	24
SB27	27	34.5	24
SB30	30	34.5	24
SB33	33	34.5	24
SB36	36	34.5	24
SB39	39	34.5	24
SB42	42	34.5	24

- Removable false front

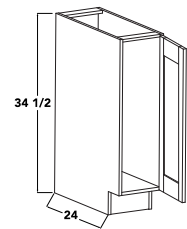
Lazy Susan



Model	Outer Size		
	W	H	D
LS36	36	34.5	24
LSTK	—	—	—

- Lazy Susan Cabinet (LS36) includes 2 tray kits
- Door can be reversed in field

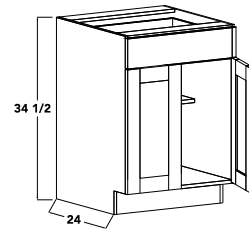
Tray Base



Model	Outer Size		
	W	H	D
BFH09	9	34.5	24

- No shelves
- Hinges on right, can be changed in the field

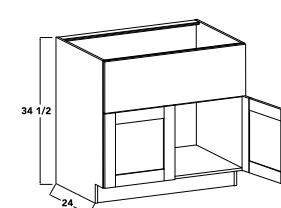
Base Double Door



Model	Outer Size		
	W	H	D
B24	24	34.5	24
B27	27	34.5	24
B30	30	34.5	24
B33	33	34.5	24
B36	36	34.5	24
B39	39	34.5	24
B42	42	34.5	24

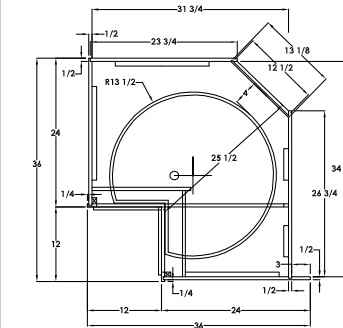
- Includes 1 half-depth adjustable shelf

Farm Sink Base

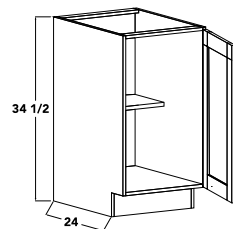


Model	Outer Size		
	W	H	D
FSB30	30	34.5	24
FSB33	33	34.5	24
FSB36	36	34.5	24

- Removable false front
- False front is 12" H



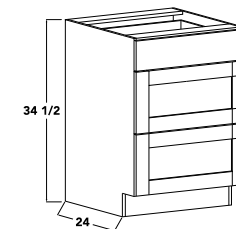
Base Single Door, Full Height



Model	Outer Size		
	W	H	D
B12FH	12	34.5	24
B15FH	15	34.5	24
B18FH	18	34.5	24
B21FH	21	34.5	24

- Includes 1 half-depth adjustable shelf
- Door can be reversed in field

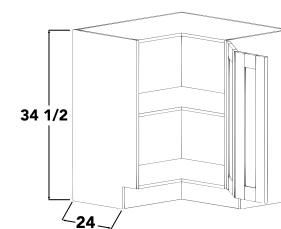
Drawer Base



Model	Outer Size		
	W	H	D
3DB12	12	34.5	24
3DB15	15	34.5	24
3DB18	18	34.5	24
3DB21	21	34.5	24
3DB24	24	34.5	24
3DB27	27	34.5	24
3DB30	30	34.5	24

- Soft close available

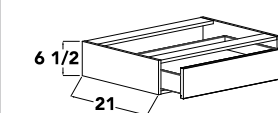
Base Easy Reach



Model	Outer Size		
	W	H	D
BER36	36	34.5	24

- Includes 1 adjustable shelf, with holes predrilled to accept LSTK (Lazy Susan Tray Kit)
- Door can be reversed in field

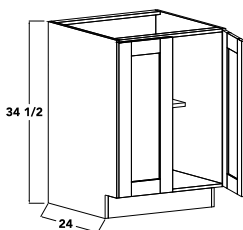
Knee Base Drawer



Model	Outer Size		
	W	H	D
KSD30	30	6.5	21
KSD36	36	6.5	21

- Soft close available

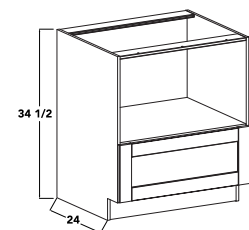
Base Double Door, Full Height



Model	Outer Size		
	W	H	D
B24FH	24	34.5	24
B27FH	27	34.5	24
B30FH	30	34.5	24
B33FH	33	34.5	24
B36FH	36	34.5	24
B39FH	39	34.5	24
B42FH	42	34.5	24

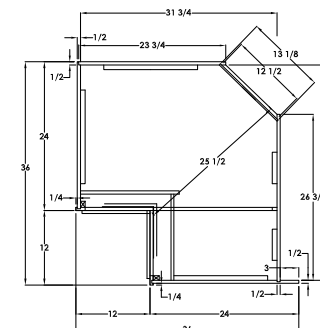
- Includes 1 half-depth adjustable shelf

Base Microwave Cabinet



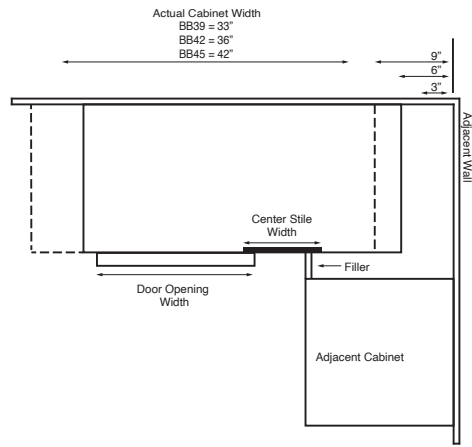
Model	Outer Size		
	W	H	D
BMW30	30	34.5	24

- Opening is 17" H x 28-3/4" W
- Interior finished to match exterior
- Soft close available



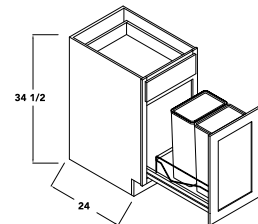
Installing a Base Blind Cabinet

Proper installation ensures that the drawer will clear hardware, & doors will open, & show correct reveal.



- Cabinet ships with door on right and blind on left
- Can be reversed in field
- Place a 3" filler next to adjacent cabinet (not included).

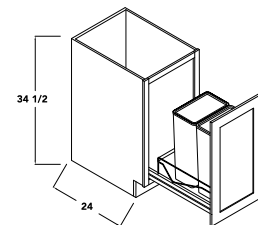
Base with Double Trash Pull Out



Model	Outer Size		
	W	H	D
B18ROWD	9	34.5	24

- Includes 2 35 qt waste containers
- Soft close available on drawer
- Soft close standard on trash pull out

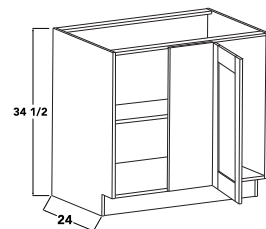
Base Full Height with Double Trash Pull Out



Model	Outer Size		
	W	H	D
B18FHROWD	9	34.5	24

- Includes 2 35 qt waste containers
- Soft close standard on trash pull out

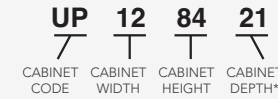
Base Blind Corner



Model	Outer Size			Pull to Fit Wall Space
	W	H	D	
BBC39	33	34.5	24	37-44
BBC42	36	34.5	24	40-44
BBC45	42	34.5	24	43-47

- Includes 1 half-depth adjustable shelf
- Ships with door on right
- Blind reversible in field
- 3" Filler required (not included)

Tall Cabinet Nomenclature

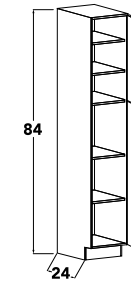


Notes:

- Standard tall cabinets are 24".
- Add door thickness for total cabinet depth.

*When a cabinet is shorter or deeper than the standard depth, it is always represented by a third set of numbers.

Utility Pantry Single Door, 21" Wide

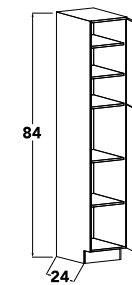


Model	Outer Size		
	W	H	D
UP2184	21	84	24
UP2190	21	90	24
UP2193	21	93	24
UP2196	21	96	24
21" DEPTH			
UP218421	21	84	21
UP219321	21	93	21

- Includes 4 adjustable, full-depth shelves plus 1 fixed shelf

- Door can be reversed in field by flipping cabinet

Utility Pantry Single Door, 12" Wide

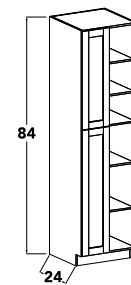


Model	Outer Size		
	W	H	D
UP1284	12	84	24
UP1290	12	90	24
UP1293	12	93	24
UP1296	12	96	24
21" DEPTH			
UP128421	12	84	21
UP129321	12	93	21

- Includes 4 adjustable, full-depth shelves plus 1 fixed shelf

- Door can be reversed in field

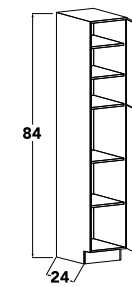
Utility Pantry Double Door, 24" Wide



Model	Outer Size		
	W	H	D
UP2484	24	84	24
UP2490	24	90	24
UP2493	24	93	24
UP2496	24	96	24
21" DEPTH			
UP248421	24	84	21
UP249321	24	93	21

- Includes 4 adjustable, full-depth shelves plus 1 fixed shelf

Utility Pantry Single Door, 15" Wide

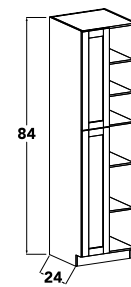


Model	Outer Size		
	W	H	D
UP1584	15	84	24
UP1590	15	90	24
UP1593	15	93	24
UP1596	15	96	24
21" DEPTH			
UP158421	15	84	21
UP159321	15	93	21

- Includes 4 adjustable, full-depth shelves plus 1 fixed shelf

- Door can be reversed in field

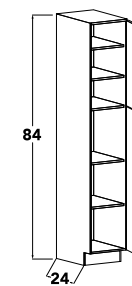
Utility Pantry Double Door, 27" Wide



Model	Outer Size		
	W	H	D
UP2784	27	84	24
UP2790	27	90	24
UP2796	27	96	24

- Includes 4 adjustable, full-depth shelves plus 1 fixed shelf

Utility Pantry Single Door, 18" Wide

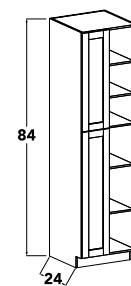


Model	Outer Size		
	W	H	D
UP1884	18	84	24
UP1890	18	90	24
UP1893	18	93	24
UP1896	18	96	24
21" DEPTH			
UP188421	18	84	21
UP189321	18	93	21

- Includes 4 adjustable, full-depth shelves plus 1 fixed shelf

- Door can be reversed in field

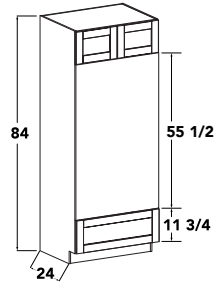
Utility Pantry Double Door, 30" Wide



Model	Outer Size		
	W	H	D
UP3084	30	84	24
UP3090	30	90	24
UP3096	30	96	24

- Includes 4 adjustable, full-depth shelves plus 1 fixed shelf

Tall Oven Cabinet



Model	Outer Size		
	W	H	D
OC3384	33	84	24
OC3390	33	90	24
OC3393	33	93	24
OC3396	33	96	24

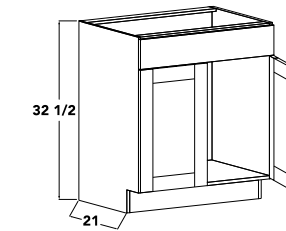
- Full panel attached with clips for oven cutout
- Max. oven cutout: 31" W x 53-1/2" H
- 84" Upper cabinet is W3312
- 90" Upper cabinet is W3318
- 93" Upper cabinet is W3321
- 96" Upper cabinet is W3324
- Soft close available

Vanity Cabinet Nomenclature



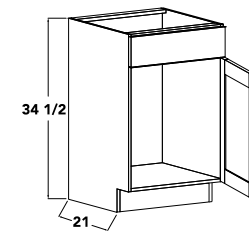
- Notes:
- Standard vanity cabinets are 21" D and 34.5" or 32.5" H.
 - Add door thickness for total cabinet depth.

Vanity Sink Base Double Door, 32-1/2" High



Model	Outer Size		
	W	H	D
VSB243221	24	32.5	21
VSB273221	27	32.5	21
VSB303221	30	32.5	21
VSB333221	33	32.5	21
VSB363221	36	32.5	21
VSB393221	39	32.5	21
VSB423221	42	32.5	21

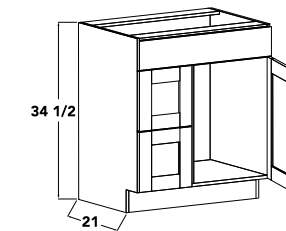
Vanity Sink Base Single Door, 34-1/2" High



Model	Outer Size		
	W	H	D
VSB213421	21	34.5	21

- Door can be reversed in field

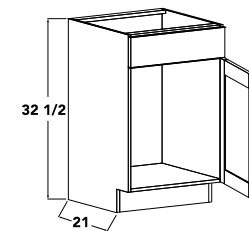
Vanity Sink Base with Drawers, 34-1/2" High



Model	Outer Size		
	W	H	D
VDD303421L^	30	34.5	21
VDD303421R^	30	34.5	21
VDD363421L†	36	34.5	21
VDD363421R†	36	34.5	21

- L and R designate drawer location
- Includes 2 12" W drawers and 1 false drawer front
- ^ Has 1 18" door
- † Has 2 12" doors
- Soft close available

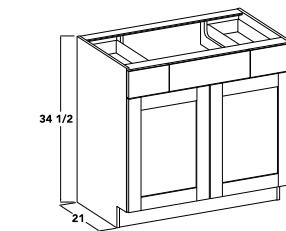
Vanity Sink Base Single Door, 32-1/2" High



Model	Outer Size		
	W	H	D
VSB213221	21	32.5	21

- Door can be reversed in field

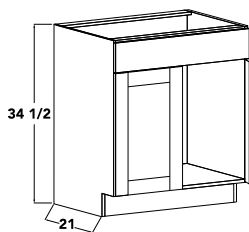
Vanity Sink Base Double Door with Drawers, 34-1/2" High



Model	Outer Size		
	W	H	D
VSB363421	36	34.5	21
VSB393421	39	34.5	21
VSB423421	42	34.5	21

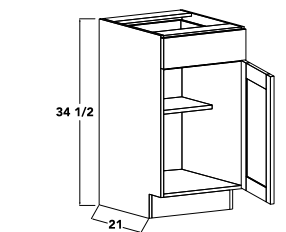
- Includes 2 9" workings drawers
- Drawer box interior is 5-3/4"
- Soft close available

Vanity Sink Base Double Door, 34-1/2" High



Model	Outer Size		
	W	H	D
VSB243421	24	34.5	21
VSB273421	27	34.5	21
VSB303421	30	34.5	21
VSB333421	33	34.5	21
VSB363421	36	34.5	21
VSB393421	39	34.5	21
VSB423421	42	34.5	21

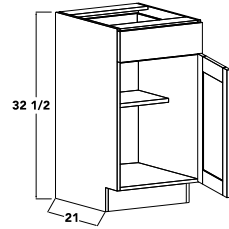
Vanity Base, 34-1/2" High



Model	Outer Size		
	W	H	D
VB123421	12	34.5	21
VB153421	15	34.5	21
VB183421	18	34.5	21
VB213421	21	34.5	21
VB243421	24	34.5	21
VB393421	39	34.5	21
VB423421	42	34.5	21

- Includes 1 half-depth adjustable shelf
- Door can be reversed in field
- Soft close available

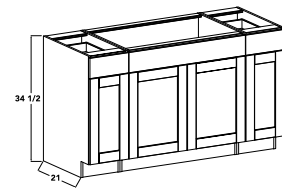
Vanity Base, 32-1/2" High



- Includes 1 half-depth adjustable shelf
- Door can be reversed in field
- Soft close available

Model	Outer Size		
	W	H	D
VB123221	12	32.5	21
VB153221	15	32.5	21
VB183221	18	32.5	21
VB213221	21	32.5	21
VB243221	24	32.5	21
VB393221	39	32.5	21
VB423221	42	32.5	21

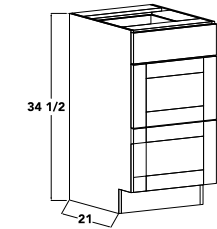
Combo Vanity Kit Single Bowl, 34-1/2" High



- Cabinets will ship individually and be installed side by side to give the appearance of a larger vanity
- 48" = VB12 + VSB24 + VB12
- 54" = VB15 + VSB24 + VB15
- 60" = VB12 + VSB36 + VB12
- 66" = VB15 + VSB36 + VB15
- 72" = VB18 + VSB36 + VB18
- Soft close available

Model	Outer Size		
	W	H	D
VSD483421	48	34.5	21
VSD543421	54	34.5	21
VSD603421	60	34.5	21
VSD663421	66	34.5	21
VSD723421	72	34.5	21

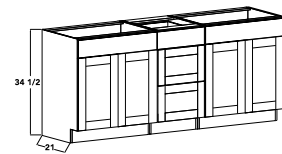
Vanity Base, Three Drawers, 34-1/2" High



- Soft close available

Model	Outer Size		
	W	H	D
3VDB123421	12	34.5	21
3VDB153421	15	34.5	21
3VDB183421	18	34.5	21
3VDB213421	21	34.5	21
3VDB243421	24	34.5	21

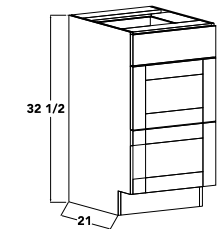
Combo Vanity Kit Two Bowl, 34-1/2" High



- Cabinets will ship individually and be installed side by side to give the appearance of a larger vanity
- 60" = VSB24 + 3VDB12 + VSB24
- 66" = VSB27 + 3VDB12 + VSB27
- 72" = VSB30 + 3VDB12 + VSB30
- Soft close available

Model	Outer Size		
	W	H	D
VDSBD603421	60	34.5	21
VDSBD663421	66	34.5	21
VDSBD723421	72	34.5	21

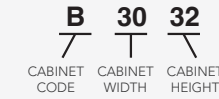
Vanity Base, Three Drawers, 32-1/2" High



- Soft close available

Model	Outer Size		
	W	H	D
3VDB123221	12	32.5	21
3VDB153221	15	32.5	21
3VDB183221	18	32.5	21
3VDB213221	21	32.5	21
3VDB243221	24	32.5	21

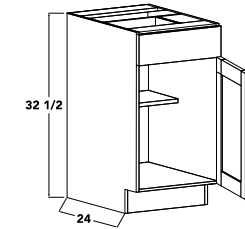
Universal Design Cabinet Nomenclature



- Notes:
- Standard universal design cabinets are 24" D and 32.5" H.
 - Add door thickness for total cabinet depth.

*When a cabinet is shorter or deeper than the standard depth, it is always represented by a third set of numbers.

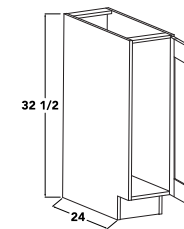
UD Base Single Door



- Includes 1 adjustable shelf
- Door can be reversed in field
- Soft close available

Model	Outer Size		
	W	H	D
B1232	12	32.5	24
B1532	15	32.5	24
B1832	18	32.5	24
B2132	21	32.5	24

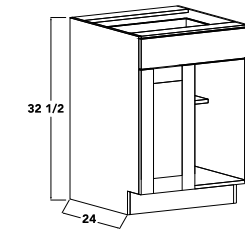
UD Tray Base



- No shelves
- Door can be reversed in field

Model	Outer Size		
	W	H	D
BFH0932	9	32.5	24

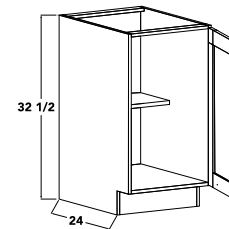
UD Base Double Door



- Includes 1 half-depth adjustable shelf
- Soft close available

Model	Outer Size		
	W	H	D
B2432	24	32.5	24
B2732	27	32.5	24
B3032	30	32.5	24
B3332	33	32.5	24
B3632	36	32.5	24
B3932	39	32.5	24
B4232	42	32.5	24

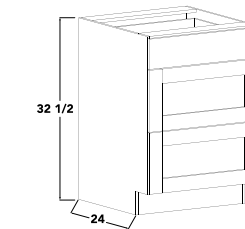
UD Base Single Door, Full Height



- Includes 1 half-depth adjustable shelf
- Door can be reversed in field

Model	Outer Size		
	W	H	D
B1232FH	12	32.5	24
B1532FH	15	32.5	24
B1832FH	18	32.5	24
B2132FH	21	32.5	24

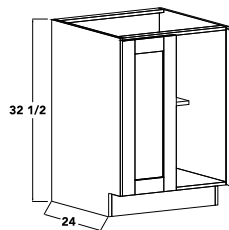
UD Drawer Base



- Soft close available

Model	Outer Size		
	W	H	D
3DB1232	12	32.5	24
3DB1532	15	32.5	24
3DB1832	18	32.5	24
3DB2132	21	32.5	24
3DB2432	24	32.5	24
3DB2732	27	32.5	24
3DB3032	30	32.5	24

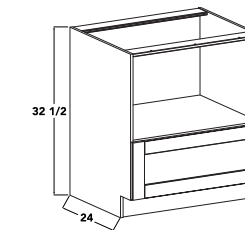
UD Base Double Door, Full Height



- Includes 1 half-depth adjustable shelf
- Soft close available

Model	Outer Size		
	W	H	D
B2432FH	24	32.5	24
B2732FH	27	32.5	24
B3032FH	30	32.5	24
B3332FH	33	32.5	24
B3632FH	36	32.5	24
B3932FH	39	32.5	24
B4232FH	42	32.5	24

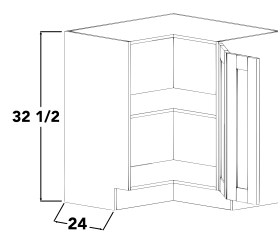
UD Base Microwave Cabinet



- Opening is 17" H x 28-3/4" W
- Interior finished to match exterior
- Soft close available

Model	Outer Size		
	W	H	D
BMW3032	30	32.5	24

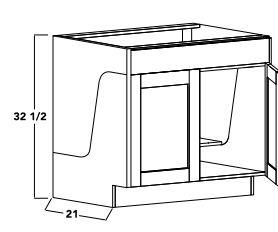
UD Base Easy Reach



Model	Outer Size		
	W	H	D
BER3632	36	32.5	24

- Includes 1 adjustable shelf, with holes predrilled to accept LSTK (Lazy Susan Tray Kit)

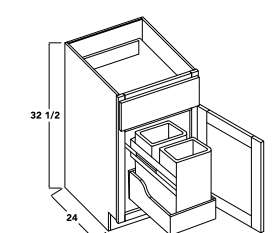
UD Vanity Sink Base with Cradle, Removable Front



Model	Outer Size		
	W	H	D
21" DEPTH			
VSB30RF3221	30	32.5	21
VSB33RF3221	33	32.5	21
VSB36RF3221	36	32.5	21

- Includes wall hung cradle

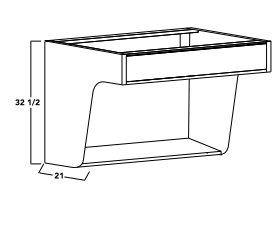
UD Base with Double Trash Pull Out



Model	Outer Size		
	W	H	D
UDB18ROWD	9	32.5	24

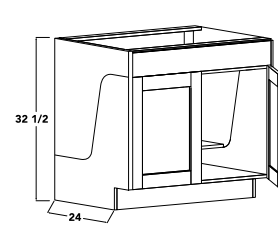
- Includes 2 35 qt waste containers
- Soft close available

UD Vanity Sink Base with Cradle, No Front



Model	Outer Size		
	W	H	D
21" DEPTH			
VSB30RF3221NF	30	32.5	21
VSB33RF3221NF	33	32.5	21
VSB36RF3221NF	36	32.5	21

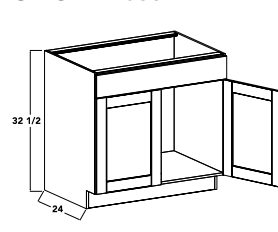
UD Sink Base, Removable Front



Model	Outer Size		
	W	H	D
SB3032RF	30	32.5	24
SB3332RF	33	32.5	24
SB3632RF	36	32.5	24

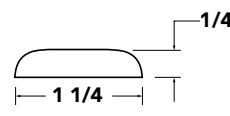
- Includes wall hung cradle

UD Sink Base



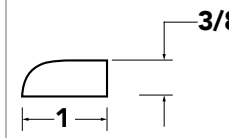
Model	Outer Size		
	W	H	D
SB3932	39	32.5	24
SB4232	42	32.5	24

Batten Scribe Molding



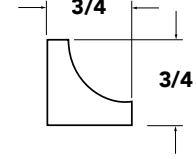
Model
BM8

Scribe Molding



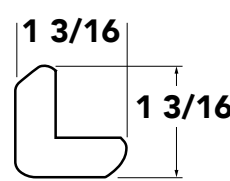
Model
SCM8

Inside Corner Molding



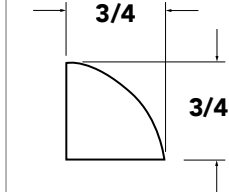
Model
IC8

Outside Corner Molding



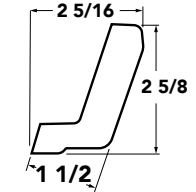
Model
OC8

Quarter Round Molding



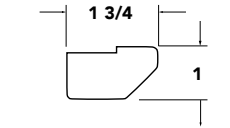
Model
QR8

Shaker Crown Molding



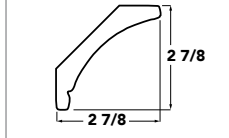
Model
SCRM8

Shaker Light Rail Molding



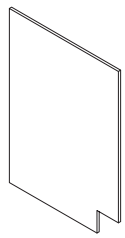
Model
SLR8

Shaker Curved Crown Molding



Model
SCCRM8

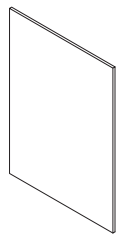
Base End Panel, Notched Toe Kick



Model	Outer Size	
	W	H
BEPTK32	25	32.5
BEPTK34	25	34.5

- 1/2" Thickness
- Finished on 2 sides
- Thermoplastic edge banding on all 4 sides


Base End Panel, Full Capture



Model	Outer Size	
	W	H
BEP32	25	32.5
BEP34	25	34.5

- 1/2" Thickness
- Finished on 2 sides
- Thermoplastic edge banding on all 4 sides

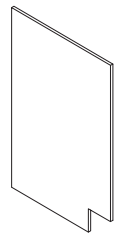
Refrigerator End Panel



Model	Outer Size	
	W	H
RP2484	24	84
RP2490	24	90
RP2493	24	93
RP2496	24	96
RP3084	30	84
RP3090	30	90
RP3093	30	93
RP3096	30	96

- 3/4" Thickness
- Thermoplastic edge banding on all 4 edges

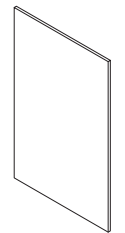
Vanity End Panel, Notched Toe Kick



Model	Outer Size	
	W	H
VEPTK32	22	32.5
VEPTK34	22	34.5

- 1/2" Thickness
- Finished on 2 sides
- Thermoplastic edge banding on all 4 sides

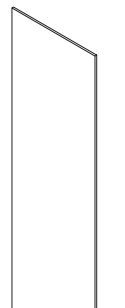
Vanity End Panel, Full Capture



Model	Outer Size	
	W	H
VEP32	22	32.5
VEP34	22	34.5

- 1/2" Thickness
- Finished on 2 sides
- Thermoplastic edge banding on all 4 sides

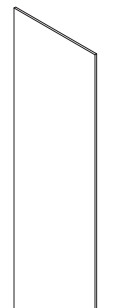
Utility End Panel, Notched Toe Kick



Model	Outer Size	
	W	H
UEPTK2284	22	84
UEPTK2290	22	90
UEPTK2293	22	93
UEPTK2296	22	96
UEPTK2584	25	84
UEPTK2590	25	90
UEPTK2593	25	93
UEPTK2596	25	96

- 1/2" Thickness
- Finished on 2 sides
- Thermoplastic edge banding on all 4 edges

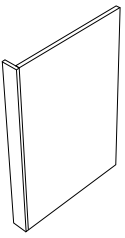
Utility End Panel, Full Capture



Model	Outer Size	
	W	H
UEP2284	22	84
UEP2290	22	90
UEP2293	22	93
UEP2296	22	96
UEP2584	25	84
UEP2590	25	90
UEP2593	25	93
UEP2596	25	96


- 1/2" Thickness
- Finished on 2 sides
- Thermoplastic edge banding on all 4 edges

Dishwasher Panel



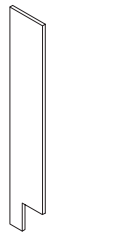
Model
DWP

Toe Kick



Model	Outer Size	
	W	H
TK96	4	96

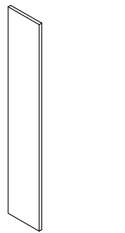
Opening End Panel, Notched Toe Kick



Model	Outer Size	
	W	H
BEPTK632	6	32.5
BEPTK634	6	34.5

- 1/2" Thickness
- Finished on 2 sides
- Thermoplastic edge banding on all 4 sides

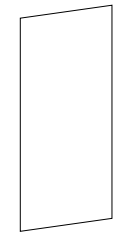
Opening End Panel, Full Capture



Model	Outer Size	
	W	H
BEP634	6	34.5

- 1/2" Thickness
- Finished on 2 sides
- Thermoplastic edge banding on all 4 sides


Large Panel



Model	Outer Size	
	W	H
P4896-3/8	48	96
P4896-3/4	48	96
P48108-3/16	48	108

- 3/16", 3/8" or 3/4" Thickness
- Edges are unfinished


L-Filler



Model	Outer Size	
	W	H
LF8	3	96

- Finished on outside face & edges

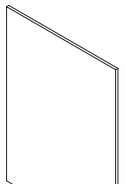
Universal Filler



Model	Outer Size	
	W	H
UF396	3	96
UF696	6	96
MOLD3^	3	96

- Filler finished on front/back
- Filler edges are unfinished
- ^ Wrapped on all sides

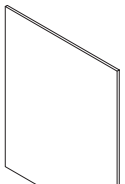
Island End Panel, Notched Toe Kick



Model	Outer Size	
	W	H
IEPTK4432	44	32.5
IEPTK4434	44	34.5
IEPTK5032	50	32.5
IEPTK5034	50	34.5

- 1/2" Thickness
- Finished on 2 sides
- Thermoplastic edge banding on all 4 sides
- 44" W used in islands 1 cabinet deep
- 50" W used in islands with back to back cabinets

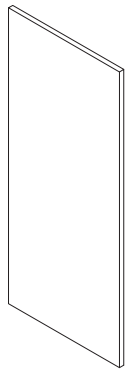
Island End Panel, Full Capture



Model	Outer Size	
	W	H
IEP4432	44	32.5
IEP4434	44	34.5
IEP5032	50	32.5
IEP5034	50	34.5

- 1/2" Thickness
- Finished on 2 sides
- Thermoplastic edge banding on all 4 sides
- 44" W used in islands 1 cabinet deep
- 50" W used in islands with back to back cabinets

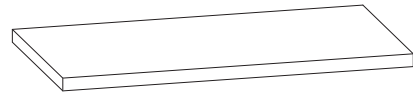
Wall End Panel



Model	Outer Size	
	W	H
WEP12	12	12
WEP15	12	15
WEP18	12	18
WEP21	12	21
WEP24	12	24
WEP30	12	30
WEP36	12	36
WEP39	12	39
WEP42	12	42
24" DEPTH		
WEP1224	24	12
WEP1524	24	15
WEP1824	24	18
WEP2124	24	21
WEP2424	24	24
WEP3024	24	30
WEP3624	24	36
WEP3924	24	39
WEP4224	24	42

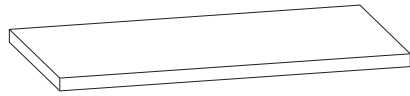
- 1/2" Thickness
- Finished on 2 sides
- Thermoplastic edge banding on all 4 edges

Floating Shelf



Model	Outer Size	
	W	H
FS1224	12	24
FS1227	12	27
FS1230	12	30
FS1233	12	33
FS1236	12	36
FS1239	12	39
FS1242	12	42
FS1245	12	45
FS1248	12	48
FS1260	12	60

Shelf



Model	Outer Size	
	W	H
SHELF9	7	9
SHELF12	7	12
SHELF15	7	15
SHELF18	7	18
SHELF21	7	21
SHELF24	7	24
SHELF27	7	27
SHELF30	7	30
SHELF33	7	33
SHELF36	7	36
SHELF39	7	39
SHELF42	7	42

• 3/4" Thickness

Lazy Susan Tray Kit



Model

LSTK

- Includes 1 tray
- Fits BER36
- Tray material is white plastic

Model	Description
TUKIT	Touch Up Kit
ADJSCH	6-Way Adjustable Soft Close Hinge
BCSCH	Wall & Base Blind Cabinet Soft Close Hinge
LSCSCH	Lazy Susan Cabinet to Door Soft Close Hinge
LSDSCH	Lazy Susan Door to Door Soft Close Hinge
SC	Shelf Clip
TPOK	Trash Pull Out Kit
UMSCG21	Undermount Soft Close Drawer Glides
WDCSCH	Wall Diagonal Soft Close Hinge

LIMITED 1-YEAR WARRANTY

Craft33® Essential Collection warrants its products to the original consumer to be free from all defects in material and workmanship under normal use for a period of one year from the original purchase date. Items included in this warranty are cabinet boxes, doors, drawers, shelves and any accessories that are manufactured by Craft33. Any accessories and other products sold with or as part of any of the above mentioned products that were not manufactured by Craft33 are excluded from coverage by this limited warranty.

WARRANTY LIMITATIONS & EXCLUSIONS

This warranty does not cover any misuse, abuse, neglect, improper storage, exposure to moisture or extreme temperatures, improper installation, improper maintenance or acts of God. The warranty does not apply to items that have been modified from their original form. In addition, this warranty does not cover any wear or deterioration resulting from natural aging, including expansion, contraction, hairline cracks or minor separation of seams. This warranty shall not apply in situations where loading or performance expectations exceed the Kitchen Cabinet Manufacturers Association testing and certification standards. In addition, this warranty does not cover products used in conjunction with Craft33 cabinets, such as appliances, counter tops or plumbing fixtures. No installer, retailer, distributor or agent has the authority to alter the obligations or limitations in this warranty.

WARRANTY PERFORMANCE

Craft33 will not provide or pay for the cost of removal of defective product, transportation and shipping of defective, repaired or replaced product or installation of repaired or replaced product, regardless of whether the work is performed by a contractor, service company or consumer. If the defective item is discontinued or not available, Craft33 reserves the right to replace the item with the most similar item available at that time. Craft33 may require, at its discretion, that the customer submit a clear photo, or that the installer, contractor, or service company view the item being claimed before honoring the warranty. Craft33 must be notified in writing, within 90 days after discovering any defect, in order to receive limited warranty coverage.

5 REGIONAL DISTRIBUTION CENTERS

Cleveland RDC | 23
216-438-5000
5700 Lee Rd S.
Maple Heights, OH 44137
After Hours: 440-251-4755

Columbus RDC | 25 ☺
614-643-2377
711 Distribution Dr.
Columbus, OH 43228
After Hours: 614-582-7832

Sebring RDC | 29
330-938-6350
350 Courtney Rd.
Sebring, OH 44672
After Hours: 330-803-3492

Toledo RDC | 83
419-470-6590
4500 N Detroit Ave.
Toledo, OH 43612
After Hours: 419-764-5578

Youngwood RDC | 24
724-404-4021
72 E. Hillis St.
Youngwood, PA 15697
After Hours: 724-221-0149

36 BRANCHES | 5 KITCHEN, BATH, WINDOW & DOOR SHOWROOMS | 23 CLASSROOMS

Akron | 4
234-352-1166
166 N. Union St.
Akron, OH 44304
After Hours: 330-697-1085

Ashtabula | 13
440-992-2116
4625 Foster Ave.
Ashtabula, OH 44004
After Hours: 440-228-3603

Bedford Heights | 14 ☺
216-285-2900
26200 Richmond Rd.
Bedford Heights, OH 44146
After Hours: 330-219-7749

Bethel Park | 46
412-835-8043
3131 Industrial Blvd.
Bethel Park, PA 15102
After Hours: 412-639-5332

Brooklyn | 123
216-293-7798
8550 Brookpark Rd.
Brooklyn OH 44129
After Hours: 216-570-8974

Byesville | 18 ☺
740-421-4758
354 West Main
Byesville, OH 43723
After Hours: 740-398-8653

Canton | 12
330-456-4508
1215 McKinley Ave. SW
Canton, OH 44707
After Hours: 330-933-5598

Cleveland East | 20 ☺
216-881-5700
6420 Woodland Ave.
Cleveland, OH 44104
After Hours: 216-570-8974

Cleveland West | 21 ☺
216-529-1010
11200 Madison Ave.
Cleveland, OH 44102
After Hours: 216-570-8974

Columbus East | 19 ☺
614-294-3500
1356 Cleveland Ave.
Columbus, OH 43211
After Hours: 614-582-7832

Columbus West | 35 ☺
614-503-0875
4300 Roberts Rd.
Columbus, OH 43228
After Hours: 614-582-7832

Dayton | 84 ☺
937-242-6980
1054 Gateway Dr.
Dayton, Ohio 45404
After Hours: 937-242-6980

DuBois | 128
814-217-0050
302 Aspen Way
Dubois, PA 15801
After Hours: 814-591-4533

Erie | 39 ☺
814-314-1516
3003 Pittsburgh Ave.
Erie, PA 16508
After Hours: 814-243-5141

Fremont | 11 ☺
419-332-2636
641 South Front St.
Fremont, OH 43420
After Hours: 419-455-5996

Jamestown | 133 ☺
716-815-6450
2148 Allen St., Ext.
Falconer, NY 14733
After Hours: 716-388-6886

Johnstown | 126 ☺
814-304-1776
339 Walnut St.
Johnstown, PA 15901
After Hours: 814-999-5801

Lorain | 2 ☺
440-245-6874
125 East 20th St.
Lorain, OH 44052
After Hours: 440-654-3974

Mansfield | 7
419-524-0411
83 Smith Ave.
Mansfield, OH 44905
After Hours: 419-571-9953

Medina | 122 ☺
234-378-9505
160 Commerce Dr.
Medina, OH 44256
After Hours: 330-813-5210

Melwood | 44
412-622-8100
434 Melwood Ave.
Pittsburgh, PA 15213
After Hours: 412-310-8228

Mentor | 120 ☺
440-391-5000
7300 Industrial Park Blvd.
Mentor, OH 44060
After Hours: 440-479-3553

Mount Vernon | 85
740-263-4313
330 Commerce Drive
Mount Vernon, OH 43050
After Hours: 567-241-8073

New Kensington | 45
724-335-8343
419 Hileman Dr.
New Kensington, PA 15068
After Hours: 412-780-6461

Newark | 9 ☺
740-345-9617
25 South 11th St.
Newark, OH 43055
After Hours: 740-219-9623

North Hills | 47
412-366-3143
331 Rochester Rd.
Pittsburgh, PA 15237
After Hours: 412-737-3336

Sandusky | 10
419-625-5354
1341 Olds St.
Sandusky, OH 44870
After Hours: 419-656-0566

Sebring | 29 ☺
330-938-6350
350 Courtney Rd.
Sebring, OH 44672
After Hours: 330-803-3492

Steubenville | 3 ☺
740-282-0951
934 W. Adams St.
Steubenville, OH 43952
After Hours: 740-457-2436

Toledo | 15 ☺
419-478-0343
220 Matzinger Rd.
Toledo, OH 43612
After Hours: 419-392-2669

Uniontown | 8 ☺
724-437-9806
85 Pittsburgh St.
Uniontown, PA 15401
After Hours: 724-480-5847

Warren | 5
330-369-2563
2436 Niles Rd. SE
Warren, OH 44484
After Hours: 330-509-9437

Washington | 16 ☺
724-225-8330
1110 W Chestnut St.
Washington, PA 15301
After Hours: 330-604-7372

Wheeling | 6 ☺
304-232-3310
2300 Market St.
Wheeling, WV 26003
After Hours: 304-830-1324

Youngstown | 38 ☺
234-706-3525
886 E. Midlothian Blvd.
Youngstown, OH 44502
After Hours: 330-301-1040

Youngwood | 24 ☺
724-404-4021
72 E. Hillis St.
Youngwood, PA 15697
After Hours: 724-221-0149

Customer Support Center ☺

800-362-9532 | Mon-Fri 6:30 AM-4:30 PM

Jay Blaushild Training & Education Center ☺

216-238-4820 | 5700 Lee Rd S. Maple Heights, OH 44137 | Mon-Fri 8:00 AM-4:00 PM