



# ORIGINAL

COLLECTION





# ORIGINAL

## COLLECTION

Craft33® provides high quality all-wood cabinets priced right. We know what it takes to build a quality and attractive cabinet for every room. The Original Collection features all-wood construction made of only the finest materials—no particle board, glue, or staples, and each cabinet is built to order right here in the USA by trained professionals. Available in the Original Collection are five door styles: Whitney, Bronson, Greyson, Brayden and Whitmore, as well as a wide selection of cabinet hardware to compliment these transitional style cabinets. The collection offers an easily upgraded soft close option for both drawers and doors.



# CONTENTS

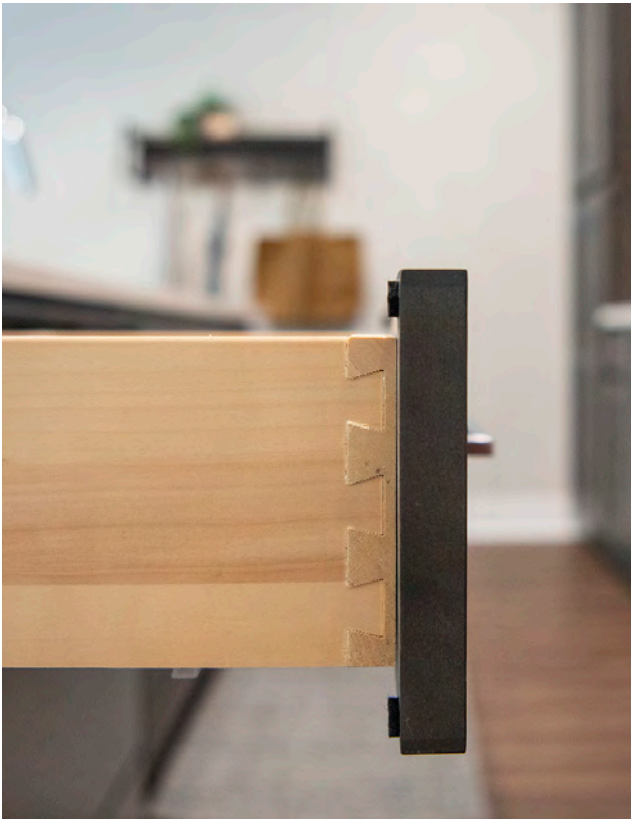
---

|    |                        |    |                              |
|----|------------------------|----|------------------------------|
| 08 | Door Styles & Finishes | 27 | Molding & Trim               |
| 11 | Cabinet Construction   | 28 | Accessories                  |
| 12 | Wall Cabinets          | 32 | Cleaning                     |
| 16 | Base Cabinets          | 33 | Care & Maintenance           |
| 19 | Tall Cabinets          | 34 | Product & Finish Information |
| 21 | Bath Cabinets          | 35 | Warranty                     |
| 23 | Universal Design       |    |                              |
| 25 | Fillers & Panels       |    |                              |









# DOOR STYLES & FINISHES

---



**BRONSON**



**WHITNEY**



**GREYSON**

# DOOR STYLES & FINISHES



**BRAYDEN**



**WHITMORE**



Craft33 is proud to be a CARB Certified kitchen cabinet manufacturer. Our cabinets comply with the rules and regulations of composite wood products by the California Code of Regulations.



KCMA does your homework for you. Our cabinets passed the toughest tests of durability and performance in the marketplace today and have earned the prestigious KCMA Certification Seal.

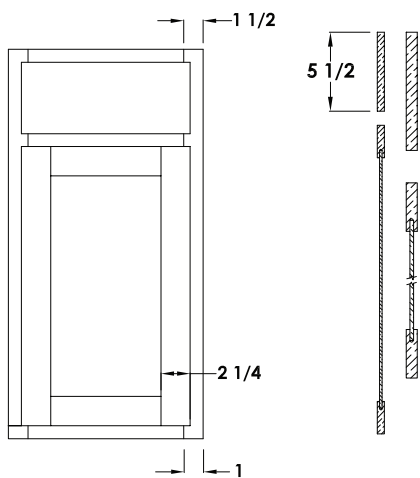
# DOOR STYLES & FINISHES

## DOOR STYLES

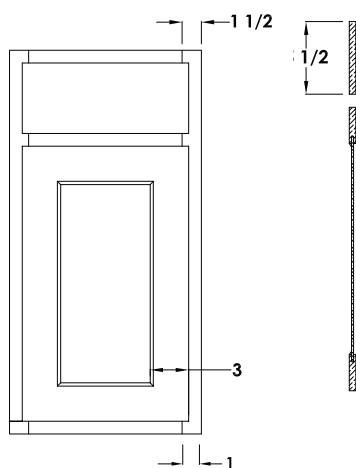
- Partial or full overlay door style
- Birch wood species
- Veneer drawer front

- Solid wood stiles and rails
- Veneer center panel
- Painted or stained finishes available

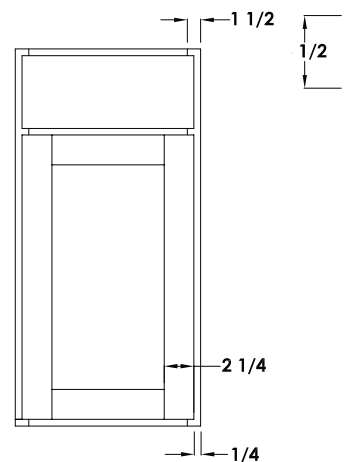
- 3/4" Thick doors
- Shaker or beveled styles available



Shaker style



Beveled style



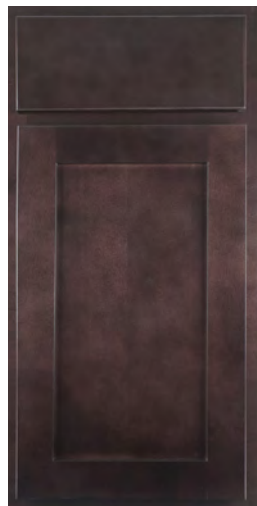
Full overlay shaker style

## FINISHES

### Bronson

Espresso stained finish  
Shaker door style

ORDER CODE: BRO



### Whitney

White painted finish  
Shaker door style

ORDER CODE: WHI



### Greyson

Gray stained finish  
Beveled door style

ORDER CODE: GRE



### Brayden

Brown stained finish  
Beveled door style

ORDER CODE: BRA



### Whitmore

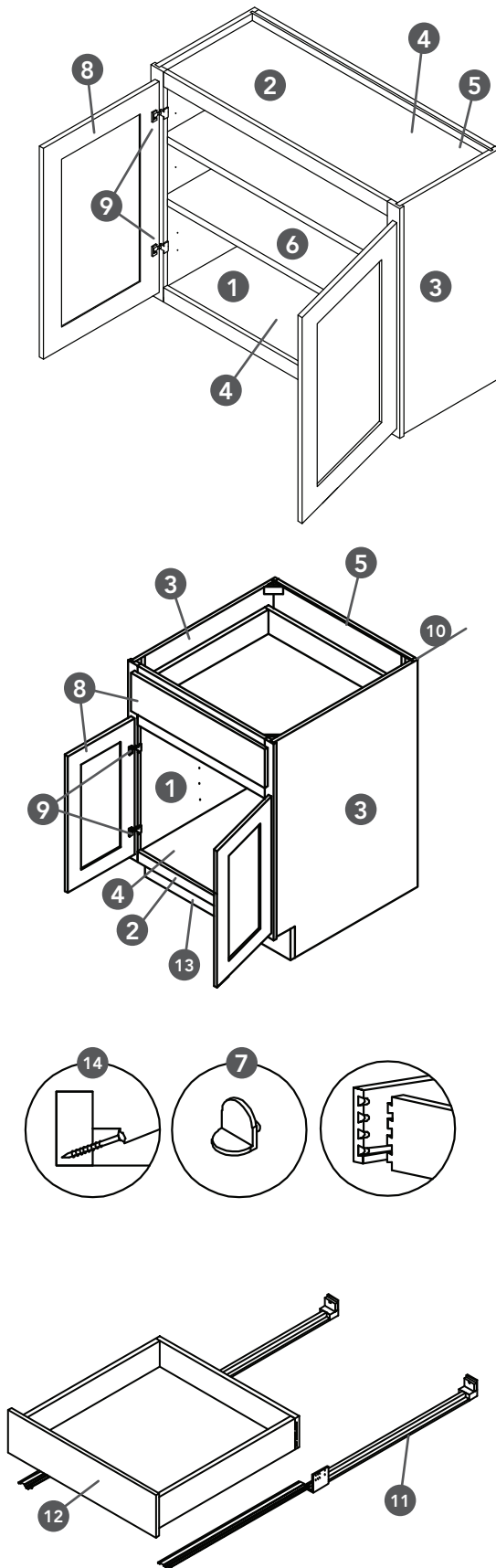
White painted finish  
Full overlay shaker door style

ORDER CODE: WHM



# CABINET CONSTRUCTION

## WHY BUY CRAFT33?



|                                     | OTHER BRANDS   | CRAFT33   |
|-------------------------------------|--|---|
| <b>1 INTERIOR</b>                   | Laminated faux wood interior   | Natural Birch interior  |
| <b>2 FACE FRAME</b>                 | —  | 3/4" Solid wood face frame  |
| <b>3 END PANELS</b>                 | Particle board of varying thickness starting at 3/8", may not have finished ends | 1/2" Veneered plywood end panels with exterior finished to match  |
| <b>4 FLOOR &amp; CEILING PANELS</b> | Particle board finished to match interior, not exterior                          | 1/2" Veneered plywood captured ceiling and floor panel  |
| <b>5 BACK PANEL</b>                 | —  | 1/2" Framed back panel with 1/4" plywood backing  |
| <b>6 SHELVES</b>                    | Particle board with laminate finish, may not be adjustable                       | 3/4" Veneered plywood 10-3/8" deep, adjustable shelving   |
| <b>7 SHELF SUPPORTS</b>             | Plastic shelf clips that are easily broken and difficult to use                  | Sturdy metal shelf clips  |
| <b>8 DOORS &amp; DRAWER FRONTS</b>  | May be laminate or thermofoil with center stile constricting access              | Standard & full overlay doors and drawers; All door frames are solid wood; Door center panels MDF veneered; Drawer fronts are MDF veneered or solid wood; All double door cabinets have butt doors* |
| <b>9 HINGES</b>                     | May not have adjustable hinges   | Standard 6-way adjustable concealed hinges with optional upgrade to soft close  |
| <b>10 CORNER BRACES</b>             | Plastic or particle board corner braces  | 3/4" Solid wood corner braces   |
| <b>11 DRAWER GLIDES</b>             | Side mount nylon roller, 3/4" extension drawer slides                            | Undermount epoxy coated drawer glides with optional upgrade to full extension soft close  |
| <b>12 DRAWER BOX</b>                | 1/2" Laminate finish particle board drawer box, pinned and glued corners         | 5/8" Solid wood dovetailed drawer with 3/8" veneered plywood drawer bottom  |
| <b>13 TOE KICK</b>                  | —  | 4-1/2" High and 3/4" thick veneered plywood unfinished toe kick   |
| <b>14 CONSTRUCTION TYPE</b>         | Particle board substrates use hot glue, pins or staples                          | All wood construction utilizes the superior holding strength of pocket screw construction   |

\* Cabinets 39"W and wider have center stile

# WALL CABINETS

NOTE: Single door wall cabinetry reversible in the field for L/R application • Double doors have butt doors unless noted • Soft close upgrade available

## Wall Cabinet Nomenclature

# W 30 12

Wall Cabinet Cabinet Width Cabinet Height

# W 36 18 24

Wall Cabinet Cabinet Width Cabinet Height Cabinet Depth

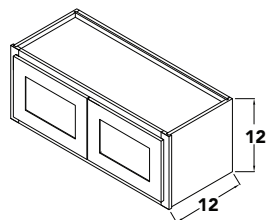
The letter(s) always represent the name of the cabinet. The first set of numbers always represent the width of the cabinet, and the second set of numbers always represent the height of the cabinet.

Whenever a cabinet is shorter or deeper than the standard 12" for wall cabinets, it is always represented by a third set of numbers.

### Notes:

- Wall cabinetry is 12" deep unless otherwise noted.
- Single door wall cabinetry can be reversed in the field for L/R application.
- Soft close hinges upgrade available.

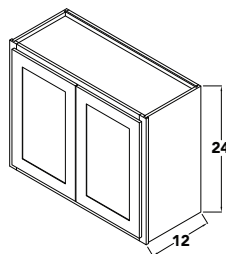
### Wall Double Door, 12" High



| Item Code | Outer Size |    |
|-----------|------------|----|
|           | W          | H  |
| W3012     | 30         | 12 |
| W3312     | 33         | 12 |
| W3612     | 36         | 12 |

- No shelf
- Soft close available

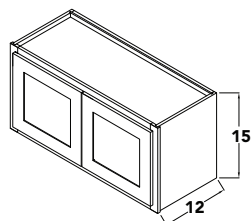
### Wall Double Door, 24" High



| Item Code | Outer Size |    |
|-----------|------------|----|
|           | W          | H  |
| W2424     | 24         | 24 |
| W3024     | 30         | 24 |
| W3324     | 33         | 24 |
| W3624     | 36         | 24 |

- One adjustable shelf
- Soft close available

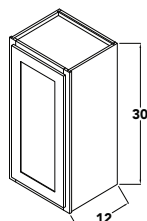
### Wall Double Door, 15" High



| Item Code | Outer Size |    |
|-----------|------------|----|
|           | W          | H  |
| W3015     | 30         | 15 |
| W3315     | 33         | 15 |
| W3615     | 36         | 15 |

- No shelf
- Soft close available

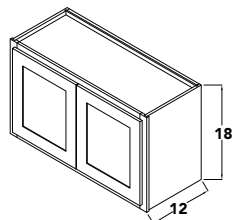
### Wall Single Door, 30" High



| Item Code | Outer Size |    |
|-----------|------------|----|
|           | W          | H  |
| W0930     | 9          | 30 |
| W1230     | 12         | 30 |
| W1530     | 15         | 30 |
| W1830     | 18         | 30 |
| W2130     | 21         | 30 |

- Two adjustable shelves
- Soft close available

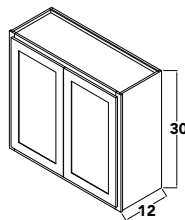
### Wall Double Door, 18" High



| Item Code | Outer Size |    |
|-----------|------------|----|
|           | W          | H  |
| W2118†    | 21         | 18 |
| W2418     | 24         | 18 |
| W3018     | 30         | 18 |
| W3318     | 33         | 18 |
| W3618     | 36         | 18 |
| W4218^    | 42         | 18 |

- No shelf
- Soft close available
- † Has single door
- ^ Has center stile

### Wall Double Door, 30" High



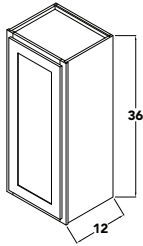
| Item Code | Outer Size |    |
|-----------|------------|----|
|           | W          | H  |
| W2430     | 24         | 30 |
| W2730     | 27         | 30 |
| W3030     | 30         | 30 |
| W3330     | 33         | 30 |
| W3630     | 36         | 30 |
| W3930^    | 39         | 30 |
| W4230^    | 42         | 30 |
| W4830^    | 48         | 30 |

- Two adjustable shelves
- Soft close available
- ^ Has center stile

# WALL CABINETS

NOTE: Single door wall cabinetry reversible in the field for L/R application • Double doors have butt doors unless noted • Wall cabinetry is 12" D unless noted

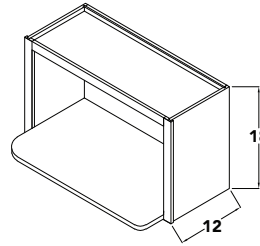
## Wall Single Door, 36" High



| Item Code | Outer Size |    |
|-----------|------------|----|
|           | W          | H  |
| W0936     | 9          | 36 |
| W1236     | 12         | 36 |
| W1536     | 15         | 36 |
| W1836     | 18         | 36 |
| W2136     | 21         | 36 |

- Two adjustable shelves
- Soft close available

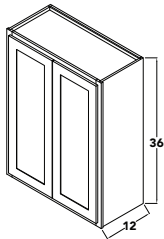
## Microwave Wall Cabinet



| Item Code | Outer Size |    |
|-----------|------------|----|
|           | W          | H  |
| MWC3018   | 30         | 18 |

- Opening: 14-1/4" H x 27" W
- Shelf depth: 17-3/8"
- Interior finished to match exterior

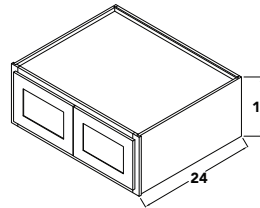
## Wall Double Door, 36" High



| Item Code | Outer Size |    |
|-----------|------------|----|
|           | W          | H  |
| W2436     | 24         | 36 |
| W2736     | 27         | 36 |
| W3036     | 30         | 36 |
| W3336     | 33         | 36 |
| W3636     | 36         | 36 |
| W3936^    | 39         | 36 |
| W4236^    | 42         | 36 |
| W4836^    | 48         | 36 |

- Two adjustable shelves
- Soft close available
- ^ Has center stile

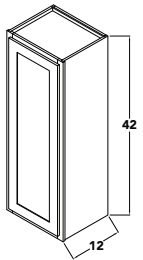
## Refrigerator Wall, 12" High



| Item Code | Outer Size |    |
|-----------|------------|----|
|           | W          | H  |
| W301224   | 30         | 12 |
| W361224   | 36         | 12 |

- No shelf
- Soft close available

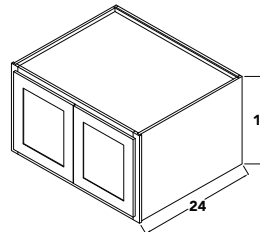
## Wall Single Door, 42" High



| Item Code | Outer Size |    |
|-----------|------------|----|
|           | W          | H  |
| W0942     | 9          | 42 |
| W1242     | 12         | 42 |
| W1542     | 15         | 42 |
| W1842     | 18         | 42 |
| W2142     | 21         | 42 |

- Three adjustable shelves
- Soft close available

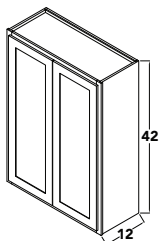
## Refrigerator Wall, 18" High



| Item Code | Outer Size |    |
|-----------|------------|----|
|           | W          | H  |
| W301824   | 30         | 18 |
| W361824   | 36         | 18 |

- No shelf
- Soft close available

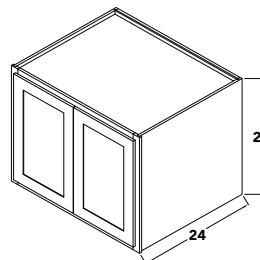
## Wall Double Door, 42" High



| Item Code | Outer Size |    |
|-----------|------------|----|
|           | W          | H  |
| W2442     | 24         | 42 |
| W2742     | 27         | 42 |
| W3042     | 30         | 42 |
| W3342     | 33         | 42 |
| W3642     | 36         | 42 |
| W3942^    | 39         | 42 |
| W4242^    | 42         | 42 |
| W4842^    | 48         | 42 |

- Three adjustable shelves
- Soft close available
- ^ Has center stile

## Refrigerator Wall, 24" High



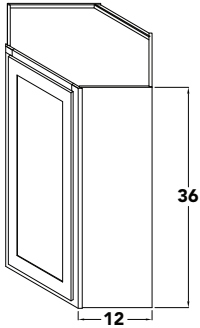
| Item Code | Outer Size |    |
|-----------|------------|----|
|           | W          | H  |
| W302424   | 30         | 24 |
| W362424   | 36         | 24 |

- No shelf
- Soft close available

# WALL CABINETS

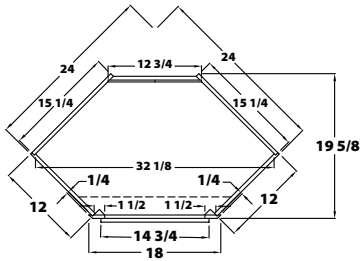
NOTE: Single door wall cabinetry reversible in the field for L/R application • Double doors have butt doors unless noted • Soft close upgrade available

## Wall Diagonal Corner, 24" Wide

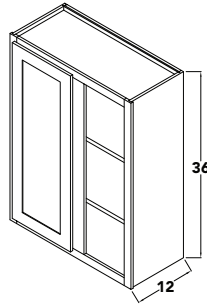


| Item Code            | Outer Size |    |
|----------------------|------------|----|
|                      | W          | H  |
| WDC2430              | 24         | 30 |
| WDC2436              | 24         | 36 |
| WDC2442 <sup>^</sup> | 24         | 42 |

- Two adjustable shelves
- Soft close available
- <sup>^</sup> Has three adjustable shelves

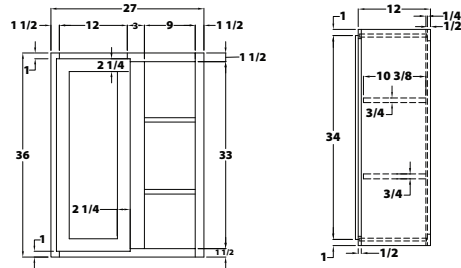


## Wall Blind Corner, 28" Wide

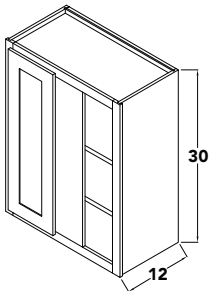


| Item Code            | Outer Size |    |
|----------------------|------------|----|
|                      | W          | H  |
| WBC2830              | 27         | 30 |
| WBC2836              | 27         | 36 |
| WBC2842 <sup>^</sup> | 27         | 42 |

- Two adjustable shelves
- Min. 0" pull for total of 27" W
- Max. 1" pull for total of 28" W
- 3" Wall filler included
- 1" Min. filler on adjacent cabinet
- Hinges on center stile of face frame & reversible in field
- Soft close available
- <sup>^</sup> Has three adjustable shelves

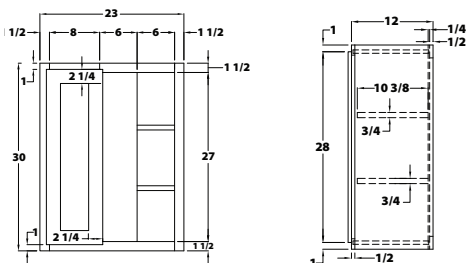


## Wall Blind Corner, 24" Wide

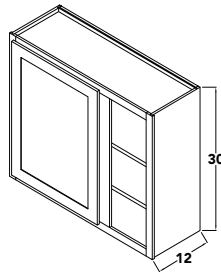


| Item Code            | Outer Size |    |
|----------------------|------------|----|
|                      | W          | H  |
| WBC2430              | 23         | 30 |
| WBC2436              | 23         | 36 |
| WBC2442 <sup>^</sup> | 23         | 42 |

- Two adjustable shelves
- Actual cabinet width: 23"
- Min. 1" pull for total of 24" W
- Max. 3" pull for total of 26" W
- 3" Wall filler included
- 1" Min. filler on adjacent cabinet
- Hinges on center stile of face frame & reversible in field
- Soft close available
- <sup>^</sup> Has three adjustable shelves

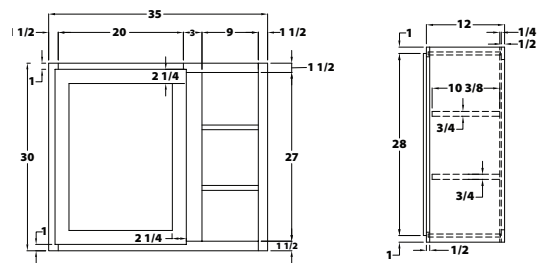


## Wall Blind Corner, 36" Wide



| Item Code            | Outer Size |    |
|----------------------|------------|----|
|                      | W          | H  |
| WBC3630              | 35         | 30 |
| WBC3636              | 35         | 36 |
| WBC3642 <sup>^</sup> | 35         | 42 |

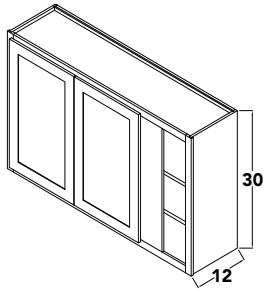
- Two adjustable shelves
- Actual cabinet width: 35"
- Min./max. 1" pull for total of 36" W
- 3" Wall filler included
- 1" Min. filler on adjacent cabinet
- Hinges on center stile of face frame & reversible in field
- Soft close available
- <sup>^</sup> Has three adjustable shelves



# WALL CABINETS

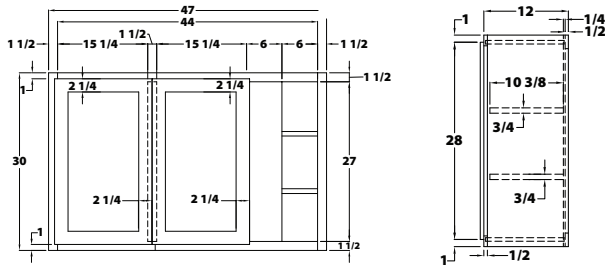
NOTE: Single door wall cabinetry reversible in the field for L/R application • Double doors have butt doors unless noted • Wall cabinetry is 12" D unless noted

## Wall Blind Corner, 48" Wide



| Item Code | Outer Size |    |
|-----------|------------|----|
|           | W          | H  |
| WBC4830^  | 47         | 30 |

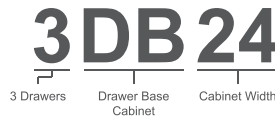
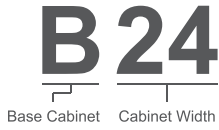
- Two adjustable shelves
- Min. 1" pull for total of 48" W
- Max. 4-1/4" pull for total of 51" W
- 3" Wall filler included
- 1" Min. filler on adjacent cabinet
- Reversible in field
- Soft close available
- ^ Has center stile



# BASE CABINETS

NOTE: Single & bi-fold door base cabinet doors reversible in the field for L/R application • Double doors have butt doors unless noted • Soft close upgrade available

## Base Cabinet Nomenclature



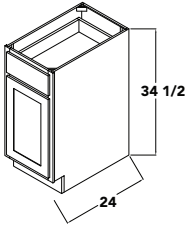
The letter(s) always represent the name of the cabinet. The following set of numbers always represents the width of the cabinet.

Whenever a base cabinet has all drawers and no doors, also known as a drawer base, the cabinet code will start with a number. That number represents the amount of drawers the cabinet has.

### Notes:

- Base cabinetry is 24" deep unless otherwise noted.
- Single and bi-fold door base cabinet doors are reversible in the field for L/R application.
- All doors have butt doors unless noted.
- Cabinets can be upgraded to soft close hinges and glides.

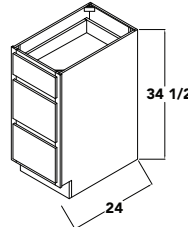
### Base, Single Door



| Item Code | Outer Size |      |
|-----------|------------|------|
|           | W          | H    |
| B12       | 12         | 34.5 |
| B15       | 15         | 34.5 |
| B18       | 18         | 34.5 |
| B21       | 21         | 34.5 |

- One adjustable shelf, half depth
- Door reversible in field
- Soft close available

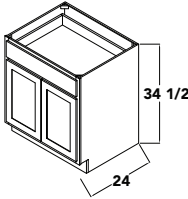
### Three Drawer Base



| Item Code | Outer Size |      |
|-----------|------------|------|
|           | W          | H    |
| 3DB12     | 12         | 34.5 |
| 3DB15     | 15         | 34.5 |
| 3DB18     | 18         | 34.5 |
| 3DB21     | 21         | 34.5 |
| 3DB24     | 24         | 34.5 |
| 3DB30     | 30         | 34.5 |

- One shallow and two deep drawers
- Soft close available

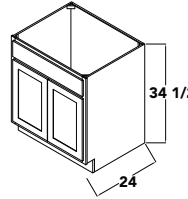
### Base, Double Door



| Item Code | Outer Size |      |
|-----------|------------|------|
|           | W          | H    |
| B24       | 24         | 34.5 |
| B27       | 27         | 34.5 |
| B30       | 30         | 34.5 |
| B33       | 33         | 34.5 |
| B36       | 36         | 34.5 |
| B39^      | 39         | 34.5 |
| B42^      | 42         | 34.5 |
| B48^      | 48         | 34.5 |

- One adjustable shelf, half depth
- Soft close available
- ^ Has center stile & two drawer front

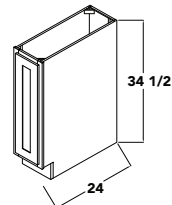
### Sink Base



| Item Code | Outer Size |      |
|-----------|------------|------|
|           | W          | H    |
| SB24      | 24         | 34.5 |
| SB27      | 27         | 34.5 |
| SB30      | 30         | 34.5 |
| SB33      | 33         | 34.5 |
| SB36      | 36         | 34.5 |
| SB39      | 39         | 34.5 |
| SB42      | 42         | 34.5 |
| SB348     | 48         | 34.5 |

- False drawer front
- No shelf
- Soft close available

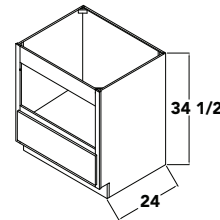
### Base, Full Height



| Item Code        | Outer Size |      |
|------------------|------------|------|
|                  | W          | H    |
| BFH09            | 9          | 34.5 |
| <b>18" DEPTH</b> |            |      |
| BFH0918          | 9          | 34.5 |
| <b>21" DEPTH</b> |            |      |
| BFH0921          | 9          | 34.5 |

- One adjustable shelf, half depth
- Door reversible in field
- Soft close available

### Base Microwave Cabinet



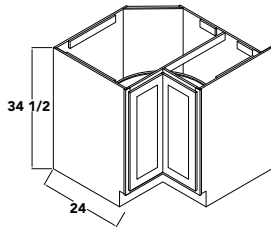
| Item Code | Outer Size |      |
|-----------|------------|------|
|           | W          | H    |
| BMW30     | 30         | 34.5 |

- Opening: 27" W x 16-3/4" H
- Interior finished to match exterior
- Soft close available

# BASE CABINETS

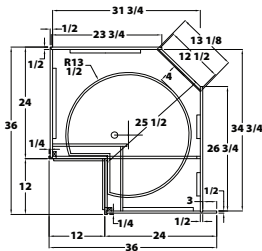
NOTE: Single & bi-fold door base cabinet doors reversible in the field for L/R application • Double doors have butt doors unless noted • Base cabinetry is 24" D unless noted

## Lazy Susan, 36" Right Hinge

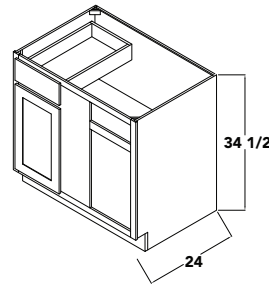


| Item Code | Outer Size |      |
|-----------|------------|------|
|           | W          | H    |
| LS36R     | 36         | 34.5 |

- Full height, bi-folding door
- Two rotating pie cut trays
- Door reversible in field
- Wood veneered plywood trays with solid wood perimeter lip
- Recommended tray weight limit: 75 lbs
- Undermount rotating bearings allow for independent rotation and full access to trays

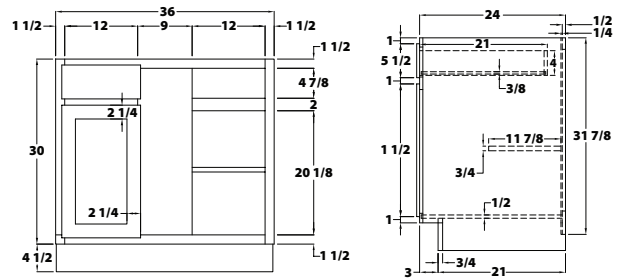


## Base Blind Corner, 36"-46"

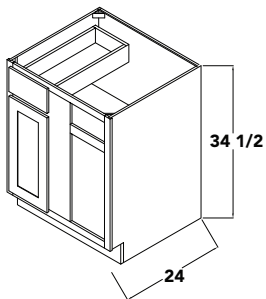


| Item Code | Outer Size |      |
|-----------|------------|------|
|           | W          | H    |
| BBC4346   | 36         | 34.5 |

- One adjustable shelf, half depth
- Door & drawer installed on left, reversible in field
- 3" Filler included
- Min. 4" pull for total of 40" W
- Max. 10" pull for total of 46" W
- 1" Min. filler adjacent to blind cabinet
- Soft close available

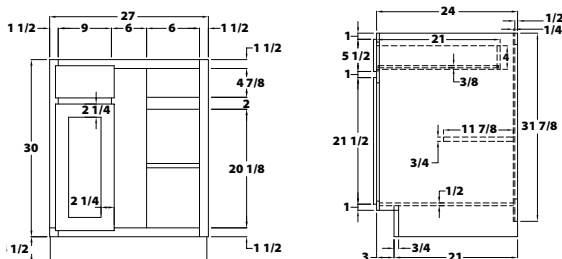


## Base Blind Corner, 27"-40"

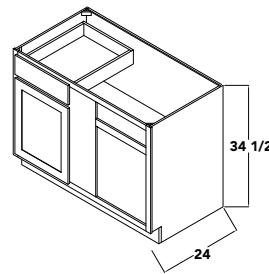


| Item Code | Outer Size |      |
|-----------|------------|------|
|           | W          | H    |
| BBC39     | 27         | 34.5 |

- One adjustable shelf, half depth
- Door & drawer installed on left, reversible in field
- 3" Filler included
- Min. 10" pull for total of 37" W
- Max. 13" pull for total of 40" W
- 1" Min. filler adjacent to blind cabinet
- Soft close available

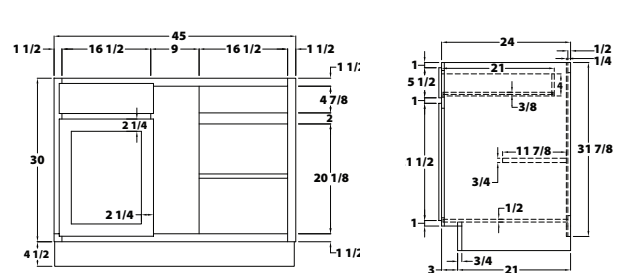


## Base Blind Corner 45"-50"



| Item Code | Outer Size |      |
|-----------|------------|------|
|           | W          | H    |
| BBC4550   | 45         | 34.5 |

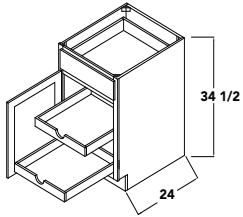
- One adjustable shelf, half depth
- Door & drawer installed on left, reversible in field
- 3" Filler included
- Min. 0" pull for total of 45" W
- Max. 6" pull for total of 51" W
- 1" Min. filler adjacent to blind cabinet
- Soft close available



# BASE CABINETS

NOTE: Single & bi-fold door base cabinet doors reversible in the field for L/R application • Double doors have butt doors unless noted • Soft close upgrade available

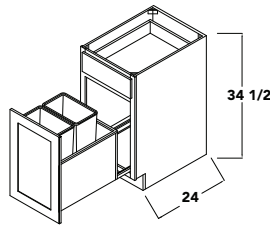
## Base with 2 Roll Out Trays, Single Door



| Item Code | Outer Size |      |
|-----------|------------|------|
|           | W          | H    |
| B15ROT    | 15         | 34.5 |
| B18ROT    | 18         | 34.5 |
| B21ROT    | 21         | 34.5 |

- Roll out trays installed 9-1/4" & 18" from floor
- Roll out tray locations are non-adjustable
- Door reversible in field
- Soft close available

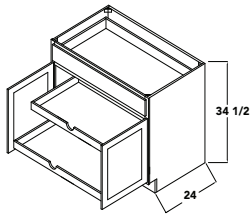
## Base with Double Trash Pull Out



| Item Code | Outer Size |      |
|-----------|------------|------|
|           | W          | H    |
| B18ROWD   | 18         | 34.5 |
| B21ROWD   | 21         | 34.5 |

- Includes two 25 qt. waste containers
- Soft close available

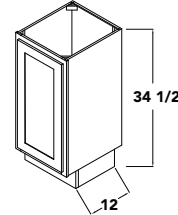
## Base with 2 Roll Out Trays, Double Door



| Item Code | Outer Size |      |
|-----------|------------|------|
|           | W          | H    |
| B24ROT    | 24         | 34.5 |
| B27ROT    | 27         | 34.5 |
| B30ROT    | 30         | 34.5 |
| B33ROT    | 33         | 34.5 |
| B36ROT    | 36         | 34.5 |

- Roll out trays installed 9-1/4" & 18" from floor
- Soft close available

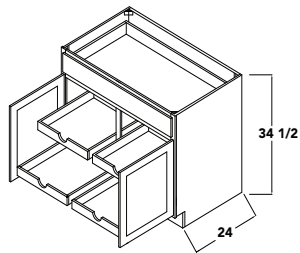
## Wall Base, Single Door with Toe Kick



| Item Code        | Outer Size |      |
|------------------|------------|------|
|                  | W          | H    |
| <b>12" DEPTH</b> |            |      |
| WB12             | 12         | 34.5 |
| WB15             | 15         | 34.5 |
| WB18             | 18         | 34.5 |
| WB21             | 21         | 34.5 |

- Two shelves
- Toe kick box shipped loose
- Soft close available

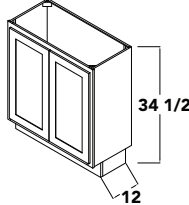
## Base with 4 Roll Out Trays, Double Door



| Item Code | Outer Size |      |
|-----------|------------|------|
|           | W          | H    |
| B42ROT    | 42         | 34.5 |
| B48ROT    | 48         | 34.5 |

- Roll out trays installed 9-1/4" & 18" from floor
- Soft close available

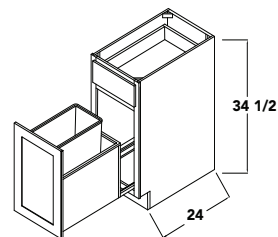
## Wall Base, Double Door with Toe Kick



| Item Code        | Outer Size |      |
|------------------|------------|------|
|                  | W          | H    |
| <b>12" DEPTH</b> |            |      |
| WB24             | 24         | 34.5 |
| WB30             | 30         | 34.5 |
| WB36             | 36         | 34.5 |

- Two shelves
- Toe kick box shipped loose
- Soft close available

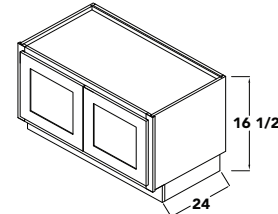
## Base with Trash Pull Out



| Item Code | Outer Size |      |
|-----------|------------|------|
|           | W          | H    |
| B15ROWS   | 15         | 34.5 |

- Includes one 35 qt. waste container
- Soft close available

## Window Seat, Double Door



| Item Code | Outer Size |      |
|-----------|------------|------|
|           | W          | H    |
| WS3024    | 30         | 16.5 |
| WS3624    | 36         | 16.5 |

- No shelf
- Toe kick box recessed left, right & front
- Box shipped loose
- Soft close available

# TALL CABINETS

NOTE: Tall cabinet doors reversible in the field for L/R application • Double doors have butt doors unless noted • Soft close upgrade available

## Utility Pantry Single Door, 15" Wide



| Item Code        | Outer Size |    |
|------------------|------------|----|
|                  | W          | H  |
| <b>24" DEPTH</b> |            |    |
| UP1584           | 15         | 84 |
| UP1590           | 15         | 90 |
| UP1596^          | 15         | 96 |
| <b>21" DEPTH</b> |            |    |
| UP158421         | 15         | 84 |
| UP159021         | 15         | 90 |
| UP159621^        | 15         | 96 |
| <b>18" DEPTH</b> |            |    |
| UP158418         | 15         | 84 |
| UP159018         | 15         | 90 |
| UP159618^        | 15         | 96 |
| <b>12" DEPTH</b> |            |    |
| UP158412         | 15         | 84 |
| UP159012         | 15         | 90 |
| UP159612^        | 15         | 96 |

- Lower door opening is 46-1/2" H
- Lower door has central railing creating a two-panel door design
- Three adjustable shelves, full depth
- Doors reversible in field
- Magnetic closure included on lower door(s) only
- Soft close available
- Min. ceiling height to stand up pantry:
  - UP1584 - 88"
  - UP1590 - 94"
  - UP1596 - 100"
- ^ Has four adjustable shelves, full depth

## Utility Pantry Door Double, 24" Wide



| Item Code        | Outer Size |    |
|------------------|------------|----|
|                  | W          | H  |
| <b>24" DEPTH</b> |            |    |
| UP2484           | 24         | 84 |
| UP2490           | 24         | 90 |
| UP2496^          | 24         | 96 |
| <b>21" DEPTH</b> |            |    |
| UP248421         | 24         | 84 |
| UP249021         | 24         | 90 |
| UP249621^        | 24         | 96 |
| <b>18" DEPTH</b> |            |    |
| UP248418         | 24         | 84 |
| UP249018         | 24         | 90 |
| UP249618^        | 24         | 96 |
| <b>12" DEPTH</b> |            |    |
| UP248412         | 24         | 84 |
| UP249012         | 24         | 90 |
| UP249612^        | 24         | 96 |

- Lower door opening is 46-1/2" H
- Lower door has central railing creating a two-panel door design
- Three adjustable shelves, full depth
- Magnetic closure included on lower door(s) only
- Soft close available
- Min. ceiling height to stand up pantry:
  - UP2484 - 88"
  - UP2490 - 94"
  - UP2496 - 100"
- ^ Has four adjustable shelves, full depth

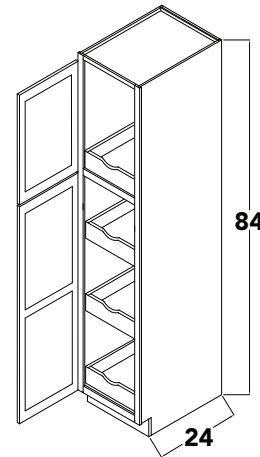
## Utility Pantry Single Door, 18" Wide



| Item Code        | Outer Size |    |
|------------------|------------|----|
|                  | W          | H  |
| <b>24" DEPTH</b> |            |    |
| UP1884           | 18         | 84 |
| UP1890           | 18         | 90 |
| UP1896^          | 18         | 96 |
| <b>21" DEPTH</b> |            |    |
| UP188421         | 18         | 84 |
| UP189021         | 18         | 90 |
| UP189621^        | 18         | 96 |
| <b>18" DEPTH</b> |            |    |
| UP188418         | 18         | 84 |
| UP189018         | 18         | 90 |
| UP189618^        | 18         | 96 |
| <b>12" DEPTH</b> |            |    |
| UP188412         | 18         | 84 |
| UP189012         | 18         | 90 |
| UP189612^        | 18         | 96 |

- Lower door opening is 46-1/2" H
- Lower door has central railing creating a two-panel door design
- Three adjustable shelves, full depth
- Doors reversible in field
- Magnetic closure included on lower door(s) only
- Soft close available
- Min. ceiling height to stand up pantry:
  - UP1884 - 88"
  - UP1890 - 94"
  - UP1896 - 100"
- ^ Has four adjustable shelves, full depth

## Utility Pantry Single Door with Four Roll Out Trays



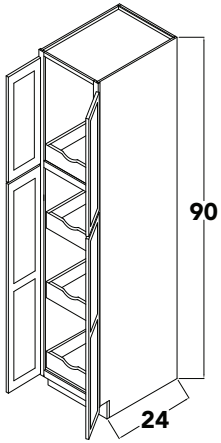
| Item Code | Outer Size |    |
|-----------|------------|----|
|           | W          | H  |
| UP1584ROT | 15         | 84 |
| UP1884ROT | 18         | 84 |
| UP1590ROT | 15         | 90 |
| UP1890ROT | 18         | 90 |
| UP1596ROT | 15         | 96 |
| UP1896ROT | 18         | 96 |

- Lower door opening is 46-1/2" H
- Lower door has central railing creating a two-panel door design
- Roll out trays installed 9-1/4", 23-3/4", 42" & 70-1/2" from floor
- Roll out tray locations non-adjustable, must be changed in field
- Doors reversible in field
- Magnetic closure included on lower door(s) only
- Soft close available
- Min. ceiling height to stand up pantry:
  - UP1584, UP1884 - 88"
  - UP1590, UP1890 - 94"
  - UP1596, UP1896 - 100"

# TALL CABINETS

NOTE: Tall cabinet doors reversible in the field for L/R application • Double doors have butt doors unless noted • Soft close upgrade available

## Utility Pantry Double Door with Four Roll Out Trays



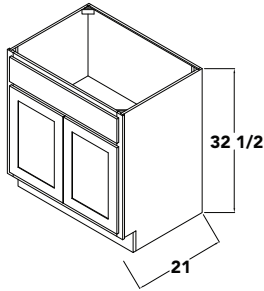
| Item Code | Outer Size |    |
|-----------|------------|----|
|           | W          | H  |
| UP2484ROT | 24         | 84 |
| UP2490ROT | 24         | 90 |
| UP2496ROT | 24         | 96 |

- Lower door opening is 46-1/2" H
- Lower door has central railing creating a two-panel door design
- Roll out trays installed 9-1/4", 23-3/4", 42" & 70-1/2" from floor
- Roll out tray are locations non-adjustable, must be changed in field
- Magnetic closure included on lower door(s) only
- Soft close available
- Min. ceiling height to stand up pantry:
  - UP2484 - 88"
  - UP2490 - 94"
  - UP2496 - 100"

# BATH CABINETS

NOTE: Bath cabinetry is 33-1/2" or 34-1/2" H • Double doors have butt doors unless noted

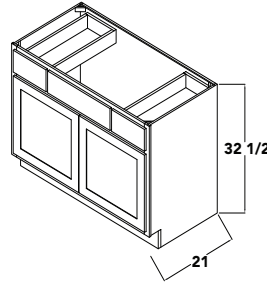
## Vanity Sink Base, 32 1/2" High



- No shelf
- Two doors
- Top drawer is false drawer front
- Toe kick molding included
- Soft close available
- † Single door, reversible in field

| Item Code        | Outer Size |      |
|------------------|------------|------|
|                  | W          | H    |
| <b>21" DEPTH</b> |            |      |
| VSB243221        | 24         | 32.5 |
| VSB303221        | 30         | 32.5 |
| VSB333221        | 33         | 32.5 |
| VSB363221        | 36         | 32.5 |
| <b>18" DEPTH</b> |            |      |
| VSB243218        | 24         | 32.5 |
| VSB303218        | 30         | 32.5 |
| VSB333218        | 33         | 32.5 |
| VSB363218        | 36         | 32.5 |
| <b>16" DEPTH</b> |            |      |
| VSB183216†       | 18         | 32.5 |

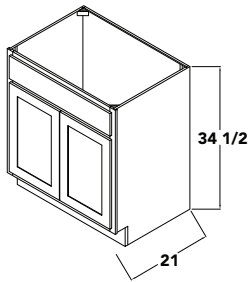
## Vanity Sink Base, Two Doors with Drawers



- No shelf
- Two doors
- Top middle drawer is false front door
- Two 10" W drawers
- Has center stile
- Toe kick molding included
- 20-1/2" Between drawer glides for sink
- Soft close available

| Item Code        | Outer Size |      |
|------------------|------------|------|
|                  | W          | H    |
| <b>21" DEPTH</b> |            |      |
| VSB423221        | 42         | 32.5 |
| VSB423421        | 42         | 34.5 |

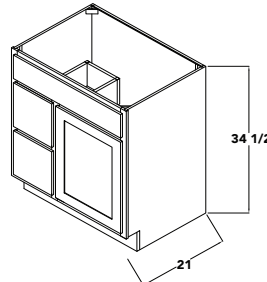
## Vanity Sink Base, 34 1/2" High



- No shelf
- Two doors
- Top drawer is false front door
- Toe kick molding included
- Soft close available

| Item Code        | Outer Size |      |
|------------------|------------|------|
|                  | W          | H    |
| <b>21" DEPTH</b> |            |      |
| VSB243421        | 24         | 34.5 |
| VSB303421        | 30         | 34.5 |
| VSB363421        | 36         | 34.5 |
| <b>18" DEPTH</b> |            |      |
| VSB243418        | 24         | 34.5 |
| VSB303418        | 30         | 34.5 |
| VSB363418        | 36         | 34.5 |

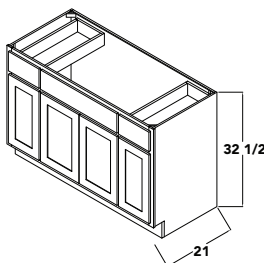
## Vanity Base Door and Drawers, 34 1/2" High



- No shelf
- Two deep drawers
- L/R designate drawer location
- Top drawer is false drawer front
- Toe kick molding included
- Soft close available
- ^ Has two doors
- Drawers are 12" wide

| Item Code        | Outer Size |      |
|------------------|------------|------|
|                  | W          | H    |
| <b>21" DEPTH</b> |            |      |
| VDD303421L       | 30         | 34.5 |
| VDD363421L^      | 36         | 34.5 |
| VDD303421R       | 30         | 34.5 |
| VDD363421R^      | 36         | 34.5 |

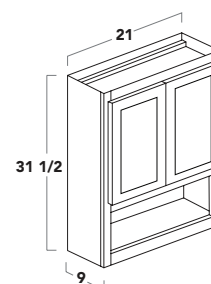
## Vanity Sink Base, Four Doors with Drawers



- No shelf
- Four doors
- Top middle drawer is false front door
- Two 10" W drawers
- Toe kick molding included
- 26-1/2" Between drawer glides for sink
- Soft close available

| Item Code        | Outer Size |      |
|------------------|------------|------|
|                  | W          | H    |
| <b>21" DEPTH</b> |            |      |
| VSB483221        | 48         | 32.5 |
| VSB483421        | 48         | 34.5 |

## Tank Topper



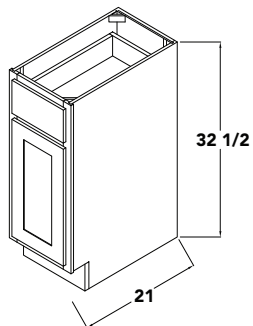
- One adjustable shelf
- Open area finished to match exterior
- Soft close available

| Item Code | Outer Size |      |
|-----------|------------|------|
|           | W          | H    |
| VTT21319  | 21         | 31.5 |

# BATH CABINETS

NOTE: Bath cabinetry is 32-1/2" or 34-1/2" H • Double doors have butt doors unless noted • Soft close upgrade available

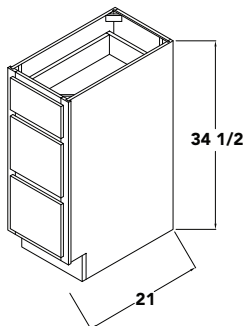
## Vanity Base, 32 1/2" High



| Item Code        | Outer Size |      |
|------------------|------------|------|
|                  | W          | H    |
| <b>21" DEPTH</b> |            |      |
| VB123221         | 12         | 32.5 |
| VB303221^        | 30         | 32.5 |

- One adjustable shelf, half depth
- VSB123221 reversible in field
- Soft close available
- ^ Has two drawers & two doors

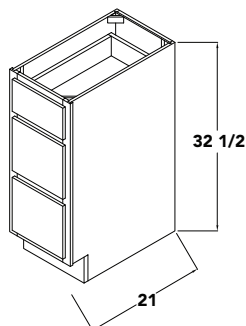
## Vanity Base, Three Drawers, 34 1/2" High



| Item Code        | Outer Size |      |
|------------------|------------|------|
|                  | W          | H    |
| <b>21" DEPTH</b> |            |      |
| 3VDB123421       | 12         | 34.5 |
| 3VDB153421       | 15         | 34.5 |
| 3VDB183421       | 18         | 34.5 |

- One shallow & two deep drawers
- Soft close available

## Vanity Base, Three Drawers, 32 1/2" High

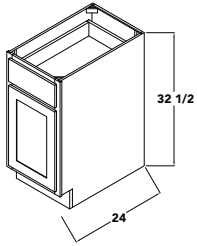


| Item Code        | Outer Size |      |
|------------------|------------|------|
|                  | W          | H    |
| <b>21" DEPTH</b> |            |      |
| 3VDB123221       | 12         | 32.5 |
| 3VDB153221       | 15         | 32.5 |
| 3VDB183221       | 18         | 32.5 |

- One shallow & two deep drawers
- Soft close available

NOTE: UD cabinetry is 32-1/2" H and 24" D unless noted • Double doors have butt doors unless noted • Soft close upgrade available

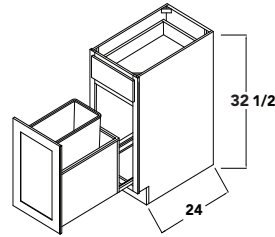
## UD Base, Single Door



| Item Code | Outer Size |      |
|-----------|------------|------|
|           | W          | H    |
| B0932     | 9          | 32.5 |
| B1232     | 12         | 32.5 |
| B1532     | 15         | 32.5 |
| B1832     | 18         | 32.5 |
| B2132     | 21         | 32.5 |

- One adjustable shelf, half depth
- Reversible in field
- Soft close available

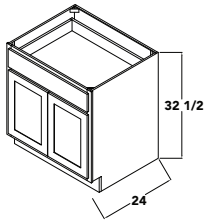
## UD Base with Trash Pull Out



| Item Code | Outer Size |      |
|-----------|------------|------|
|           | W          | H    |
| B1532ROWS | 15         | 32.5 |

- Includes one 35 qt. waste container
- Soft close available
- Hinge holes will remain in door

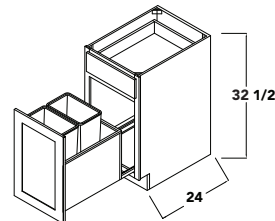
## UD Base, Double Door



| Item Code | Outer Size |      |
|-----------|------------|------|
|           | W          | H    |
| B2432     | 24         | 32.5 |
| B3032     | 30         | 32.5 |
| B3632     | 36         | 32.5 |

- One adjustable shelf, half depth
- Soft close available

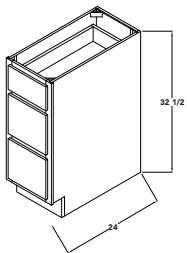
## UD Base with Double Trash Pull Out



| Item Code | Outer Size |      |
|-----------|------------|------|
|           | W          | H    |
| B1832ROWD | 18         | 32.5 |
| B2132ROWD | 21         | 32.5 |

- Includes two 25 qt. waste containers
- Soft close available
- Hinges holes will remain in door

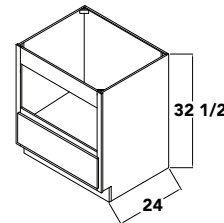
## UD Base, Three Drawers



| Item Code | Outer Size |      |
|-----------|------------|------|
|           | W          | H    |
| 3DB1232   | 12         | 32.5 |
| 3DB1532   | 15         | 32.5 |
| 3DB1832   | 18         | 32.5 |
| 3DB2132   | 21         | 32.5 |

- One shallow and two deep drawers
- Soft close available
- Top drawer aligns with UD base cabinetry

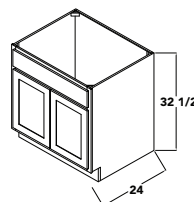
## UD Base Microwave Cabinet



| Item Code | Outer Size |      |
|-----------|------------|------|
|           | W          | H    |
| BMW3032   | 30         | 32.5 |

- Opening: 27" W x 16-3/4" H
- Soft close available
- Interior finished to match exterior

## UD Sink Base



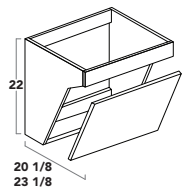
| Item Code | Outer Size |      |
|-----------|------------|------|
|           | W          | H    |
| SB2432    | 24         | 32.5 |
| SB3032    | 30         | 32.5 |
| SB3332    | 33         | 32.5 |
| SB3632    | 36         | 32.5 |
| SB3932    | 39         | 32.5 |

- False drawer front
- No shelf
- Soft close available

# UNIVERSAL DESIGN

NOTE: UD cabinetry is 32-1/2" H and 24" D unless noted • Double doors have butt doors unless noted • Soft close upgrade available

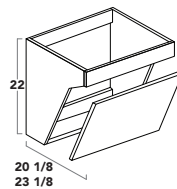
## UD Wall Hung Sink Base, 31" Wide



| Item Code            | Outer Size |    |
|----------------------|------------|----|
|                      | W          | H  |
| <b>20-1/8" DEPTH</b> |            |    |
| VSBWH31*             | 31         | 22 |
| <b>23-1/8" DEPTH</b> |            |    |
| SBWH31*              | 31         | 22 |

- Install at 32-1/2" off floor for ADA Compliance
- \*Needs 33" W spacing for removable sink base
- Removable Sink Base sold separately

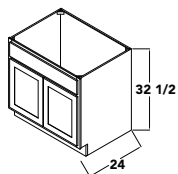
## UD Wall Hung Sink Base, 34" Wide



| Item Code            | Outer Size |    |
|----------------------|------------|----|
|                      | W          | H  |
| <b>20-1/8" DEPTH</b> |            |    |
| VSBWH34*             | 34         | 22 |
| <b>23-1/8" DEPTH</b> |            |    |
| SBWH34*              | 34         | 22 |

- Install at 32-1/2" off floor for ADA Compliance
- \*Needs 36" W spacing for removable sink base
- Removable Sink Base sold separately

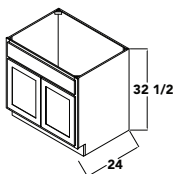
## UD Removable Sink Base, 33" Wide



| Item Code        | Outer Size |      |
|------------------|------------|------|
|                  | W          | H    |
| RSB3332          | 33         | 32.5 |
| <b>21" DEPTH</b> |            |      |
| RVSB333221       | 33         | 32.5 |

- Open back
- Required Wall Hung Sink Base sold separately
- Soft close available

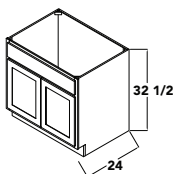
## UD Removable Sink Base, 36" Wide



| Item Code        | Outer Size |      |
|------------------|------------|------|
|                  | W          | H    |
| RSB3632          | 36         | 32.5 |
| <b>21" DEPTH</b> |            |      |
| RVSB363221       | 36         | 32.5 |

- Open back
- Required Wall Hung Sink Base sold separately
- Soft close available

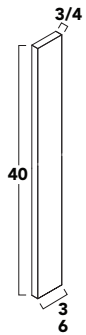
## UD Removable Sink Base, 36" Wide



| Item Code        | Outer Size |      |
|------------------|------------|------|
|                  | W          | H    |
| RSB3632          | 36         | 32.5 |
| <b>21" DEPTH</b> |            |      |
| RVSB363221       | 36         | 32.5 |

- Open back
- Required Wall Hung Sink Base sold separately
- Soft close available

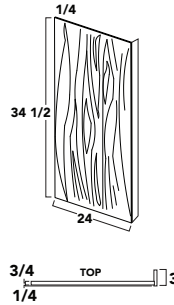
## Wall Filler



| Item Code | Outer Size |    |
|-----------|------------|----|
|           | W          | H  |
| WF342     | 3          | 42 |
| WF642     | 6          | 42 |

- 3/4" Thick solid wood
- Finished front and long sides
- Cut W/H in field as necessary

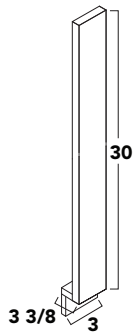
## Dishwasher Panel



| Item Code | Outer Size |      |
|-----------|------------|------|
|           | W          | H    |
| DWP       | 24         | 34.5 |

- Used next to a dishwasher at the end of a run of cabinetry
- 3/4" Thick veneered plywood panel finished on both sides
- Panel bored for assembly along one unfinished length side
- 3/4" Thick solid wood return filler finished on front and long sides
- Assembly required in field
- No toe kick notch
- Assembly screws included

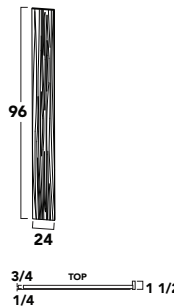
## Base Filler



| Item Code | Outer Size |    |
|-----------|------------|----|
|           | W          | H  |
| BF3       | 3          | 30 |
| BF6       | 6          | 30 |

- 3/4" Thick solid wood
- Finished front and long sides
- Cut W/H in field as necessary

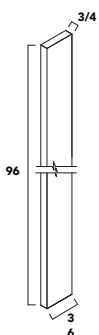
## Refrigerator Panel, 1-1/2" Return



| Item Code | Outer Size |    |
|-----------|------------|----|
|           | W          | H  |
| RP2496    | 24         | 96 |

- Conceals sides/support wall cabinetry above refrigerator
- 3/4" Thick veneered plywood panel finished on both sides
- Panel bored for assembly along one length side
- 3/4" Thick solid wood return filler finished on front and long sides
- Assembly required in field
- No toe kick notch
- Assembly screws included

## Tall Filler

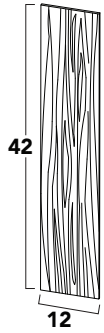


| Item Code | Outer Size |    |
|-----------|------------|----|
|           | W          | H  |
| TF396     | 3          | 96 |
| TF696     | 6          | 96 |

- 3/4" Thick solid wood
- Finished front and long sides
- Cut W/H in field as necessary

# FILLERS & PANELS

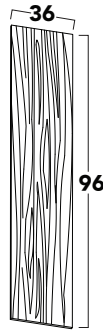
## Wall Skin



| Item Code | Outer Size |    |
|-----------|------------|----|
|           | W          | H  |
| WSK1242   | 12         | 42 |

- 1/4" Thick veneered MDF
- For skinning exposed sides of wall cabinetry to match door finish
- One finished side
- Cut in field for shorter wall cabinets

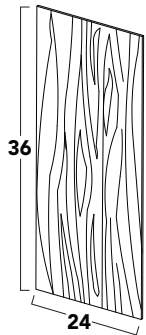
## Back Skin



| Item Code | Outer Size |    |
|-----------|------------|----|
|           | W          | H  |
| BS9636    | 96         | 36 |

- 1/4" Thick veneered MDF
- One finished side
- Cut W/H in field as necessary
- Grain runs along 96" direction

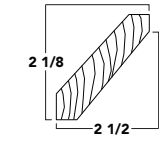
## Base Skin



| Item Code | Outer Size |    |
|-----------|------------|----|
|           | W          | H  |
| BSK2436   | 24         | 36 |

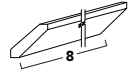
- 1/4" Thick veneered MDF
- For skinning exposed sides of base/vanity cabinets to match door finish
- One finished side
- Cut in field for base and vanity cabinets

## Angled Crown Molding



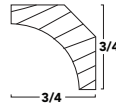
Item Code

ACM8



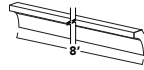
- Solid wood
- 8' Length

## Inside Corner Molding



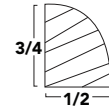
Item Code

IC8



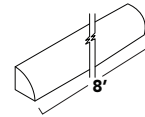
- Solid wood
- 8' Length

## Shoe Molding



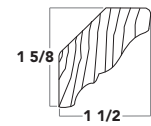
Item Code

SHM8



- Solid wood
- 8' Length

## Crown Molding



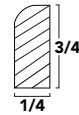
Item Code

MCM8



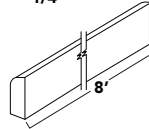
- Solid wood
- 8' Length

## Scribe Molding



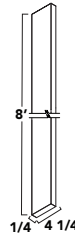
Item Code

SCM8



- Solid wood
- 8' Length

## Toe Kick

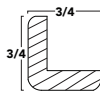


Item Code

TK8

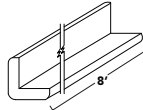
- 1/4" Thick veneered plywood
- 8' Length

## Outside Corner Molding



Item Code

OC8



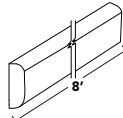
- Solid wood
- 8' Length

## Batten Molding



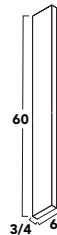
Item Code

BM8



- Solid wood
- 8' Length

## Straight Valance



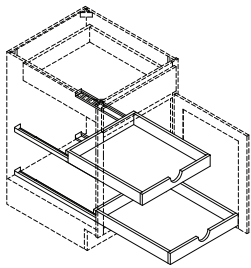
Item Code

VA660

- Solid wood
- Finished on all sides

# ACCESSORIES

## Roll Out Tray with Glides

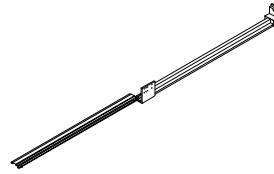


### Item Code

ROT15SC  
ROT18SC  
ROT21SC  
ROT24SC  
ROT27SC  
ROT30SC  
ROT33SC  
ROT36SC

- For use in 24" D cabinets (cabinet not included)
- Tray is solid wood with dovetail construction and 2-1/2" H sides
- Soft close is standard
- Recommended weight limit: 100 lbs
- Available as installed product, see pg 18-20
- Sold individually

## Standard Undermount Drawer Glide, Pair

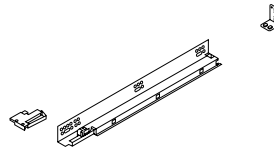


### Item Code

UMG21  
UMG24

- Sold as a pair
- 3/4 extension
- Undermount
- Number indicates cabinet depth
- Compatible with all drawers & trays
- Recommended weight limit: 75 lbs

## Undermount Soft Close Drawer Glide, Pair

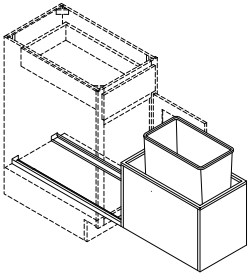


### Item Code

UMSCG21  
UMSCG24

- Sold as a pair
- Full extension
- Undermount
- Soft close
- Number indicates cabinet depth
- Compatible with all drawers, trays and trash pull outs
- Recommended weight limit: 100 lbs

## Trash Pull Out, Single Standard Base with Glides

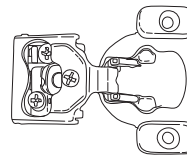


### Item Code

TPOS15SC

- For use in 24" D cabinets (cabinet not included)
- Base support is solid wood with dovetail construction
- Fits in B15
- Includes one 35 qt waste container
- Soft close is standard
- Available as installed product, see pg 18

## Standard Hinge

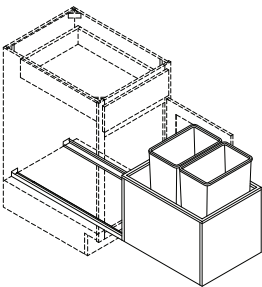


### Item Code

SH

- Sold individually
- 6-Way adjustable hinge
- Each door requires two hinges (utility and 42"+ doors require three hinges)
- Compatible with all doors (except LS36R)

## Trash Pull Out, Double Standard Base with Glides

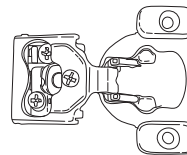


### Item Code

TPOD18SC\*  
TPOD21SC\*\*

- For use in 24" D cabinets (cabinet not included)
- Base support is solid wood with dovetail construction
- \*Fits in B18
- \*\*Fits in B21
- Includes two 25 qt waste containers
- Soft close is standard
- Available as installed product, see pg 18

## Full Overlay Hinge

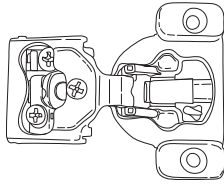


### Item Code

FOH

- Sold individually
- 6-Way adjustable hinge
- Each door requires two hinges (utility and 42"+ doors require three hinges)
- Compatible with all doors (except LS36R)

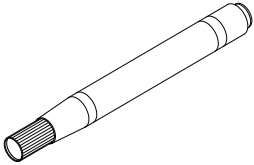
### 6-Way Adjustable Soft Close Hinge with Built-In Piston



**Item Code**  
ADJSCH

- Sold individually
- 6-Way adjustable hinge
- Each door requires two hinges (utility and 42" + doors require three hinges)
- Compatible with all doors (except LS36R)
- Built-in soft close feature

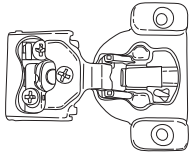
### Touch-Up Marker



**Item Code**  
TUM

- Felt-tipped marker filled with stain or paint
- For small scuffs or scratches

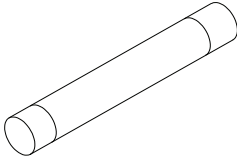
### Full Overlay Soft Close Hinge



**Item Code**  
FOSCH

- Sold individually
- 6-Way adjustable hinge
- Each door requires two hinges (utility and 42" + doors require three hinges)
- Compatible with all doors (except LS36R)
- Built-in soft close feature

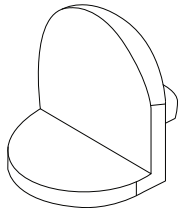
### Touch-Up Stick



**Item Code**  
FS

- Wax fill stick
- For small punctures and deep scratches

### Metal Shelf Clips

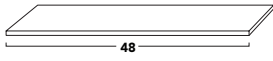


**Item Code**  
MSC

- Sold individually or in bags of 1,000

# ACCESSORIES

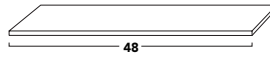
## Replacement Wall Cabinet Shelf



| Item Code | Outer Size |      |
|-----------|------------|------|
|           | W          | H    |
| SHELF09   | 10.38      | 7.5  |
| SHELF12   | 10.38      | 10.5 |
| SHELF15   | 10.38      | 13.5 |
| SHELF18   | 10.38      | 16.5 |
| SHELF21   | 10.38      | 19.5 |
| SHELF23   | 10.38      | 21.5 |
| SHELF24   | 10.38      | 22.5 |
| SHELF27   | 10.38      | 25.5 |
| SHELF30   | 10.38      | 28.5 |
| SHELF33   | 10.38      | 31.5 |
| SHELF35   | 10.38      | 33.5 |
| SHELF36   | 10.38      | 34.5 |
| SHELF39   | 10.38      | 37.5 |
| SHELF42   | 10.38      | 40.5 |
| SHELF47   | 10.38      | 45.5 |
| SHELF48   | 10.38      | 46.5 |
| WALLSHELF | 10.38      | 48   |

- Natural birch finish
- Metal shelf clips not included
- 3/4" Shelf height
- Sold individually

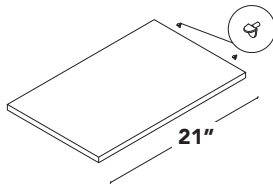
## Replacement Base Cabinet Shelf



| Item Code | Outer Size |      |
|-----------|------------|------|
|           | W          | H    |
| SHELF09B  | 11.87      | 7.5  |
| SHELF12B  | 11.87      | 10.5 |
| SHELF15B  | 11.87      | 13.5 |
| SHELF18B  | 11.87      | 16.5 |
| SHELF21B  | 11.87      | 19.5 |
| SHELF24B  | 11.87      | 22.5 |
| SHELF27B  | 11.87      | 25.5 |
| SHELF30B  | 11.87      | 28.5 |
| SHELF33B  | 11.87      | 31.5 |
| SHELF36B  | 11.87      | 34.5 |
| SHELF39B  | 11.87      | 37.5 |
| SHELF42B  | 11.87      | 40.5 |
| SHELF45B  | 11.87      | 43.5 |
| SHELF48B  | 11.87      | 46.5 |
| BASESHELF | 11.87      | 48   |

- Natural birch finish
- Metal shelf clips not included
- 3/4" Shelf height
- Sold individually

## Pantry Shelf Kit



| Item Code        | Outer Size |     |
|------------------|------------|-----|
|                  | W          | H   |
| <b>21" Depth</b> |            |     |
| UP1584           | 15         | 3/4 |
| UP1590           | 18         | 3/4 |
| UP1596^          | 24         | 3/4 |

- Natural birch finish
- Comes with 2 shelves and clips



Learn more about our lighting products at [bright33.com](https://bright33.com)

# CLEANING

---

## HOW TO CLEAN YOUR CABINETS

The finish on Craft33 cabinetry is just like that of a high quality piece of furniture. Although it is designed to protect against normal, everyday home use, general upkeep and cleanliness are very important. With proper care, your cabinetry will last long and look great.

### Dusting

Dust your cabinets frequently with a soft, lint-free cloth. If need be, slightly dampen the cloth with water or a spray-type dust remover.

### Spills

Clean spills and splatters immediately. Prolonged exposure to spills, including food, water or other liquids, or to oil and grease can cause permanent discoloration or damage your cabinet's finish. To clean spills, use a clean, soft cloth dampened with mild soap. Dry immediately with another clean, soft cloth.

### Cleaning

Use a clean, soft cloth dampened with mild soap to clean your cabinets. Dry immediately with another clean, soft cloth. There are also a number of wood cleaning products available for use on cabinetry.

### Waxing & Polishing

Waxing your cabinets is not required or recommended. Over time, the wax will build up on the surface of the cabinet. This can cause a hazy, streaky or yellowed appearance as well as attract dust particles. The wax can become very difficult to remove. We recommend that you clean and polish your cabinets once or twice each year. To polish your cabinets, use a light coat of quality furniture polish.

### Hardware

You will want to periodically clean knobs, pulls or handles installed on your cabinet doors and drawers. To do so, use a clean, soft cloth dampened with mild soap. Thoroughly dry all hardware joints, surfaces and the surrounding areas with another clean, soft cloth.

### DO NOT USE:

- Silicone based furniture duster/polish
- Harsh chemicals
- Solvent or petroleum-based products such as mineral spirits, nail polish removers and paint thinners
- Abrasive cleaning products
- Ammonia or cleaning products that may contain ammonia
- Bleach or cleaning products that may contain bleach

## HOW TO CARE FOR YOUR CABINETS

### Self-Cleaning Appliances

Self-cleaning appliances use intense heat during the clean cycle. During installation and with age, the integrity of the seal or gasket on the appliance can be compromised. Because of this, Craft33 recommends the removal of any cabinet doors and/or drawers located adjacent to or directly above the appliance during a cleaning cycle.

### Heat Producing Appliances

Mounting or placing heat producing appliances beneath cabinets is not recommended. The excess heat and moisture from appliances such as coffee makers and toaster ovens can damage your cabinets.

### UV Effects

Ultraviolet light rays from natural sunlight can affect the appearance of your cabinets. Depending on the natural characteristics of wood and the applied finish, the amount/direction of light exposure and the portion of the cabinet that receives light, the appearance of your cabinet(s) may change over time.

## CABINET MAINTENANCE

No matter how careful you are with your cabinetry, normal wear and tear from everyday use is inevitable. That's why Craft33 has made it easier than ever to keep your cabinets feeling and looking brand new.

### Touch-Up

We offer Touch-Up Markers and Fill Sticks that have been specially formulated for each of your high quality cabinet finishes. Please work with your Craft33 Customer Service Representative on how to acquire and properly use these products.

NOTE: Substantial repairs may require the help of a professional refinisher.

### Adjusting Your Cabinetry Hardware

Over time the door hinges, soft close pistons, drawer glide and decorative hardware on your cabinetry may need to be tightened or adjusted. All of our hardware has been designed to be easily adjusted by you, the customer, with a Philips head ("crosshead") screwdriver.

# PRODUCT & FINISH INFORMATION

---

Because we use real wood in our products, there are certain characteristics and qualities that you may not be familiar with. As your satisfaction is our number one priority, we want to make sure you are fully aware of the important information below regarding our cabinetry and the applied finish:

## Expansion & Contraction

The properties of natural wood are such that it can react to climatic or humidity changes found within most homes. As much as half of the weight of freshly cut wood is water. Craft33 doors and face frames are manufactured from solid wood that has been carefully kiln-dried, retaining just enough moisture for proper construction and finishing. The center panels of some of the Craft33 doors are wood and some are medium density fiberboard. As a product of nature, solid hardwoods continue to react to their surroundings long after manufacture. When wood cabinet doors are in a warm, moist environment (high relative humidity), the wood expands. In a dry, colder environment (low relative humidity), the wood will contract. This phenomenon can be controlled but never eliminated even with humidity regulation.

Door panels are prone to minor expansion and contraction as seasonal temperature and humidity changes occur in a home. The contraction or shrinkage of the center door panel during low humidity periods may result in the appearance of an unfinished line along the edge of the center panel. Craft33 does not consider the appearance of an unfinished line as a defect and will not replace doors due to this situation. It is recommended that a humidity control system is incorporated in a home to reduce the possibility of expansion and contraction in wood products. Touch-up markers are made available for purchase to cover this edge line. Oftentimes, touch-up may only be necessary within the first year.

Craft33 is not responsible for any of these conditions and variations.

## Finishes

Over a period of time wood species in all finishes will exhibit color changes when exposed to different types of light and environment. Such color changes are to be expected and are not defects. Due to the natural variation and aging process, minor differences may be observed in color match when replacing doors or adding cabinets at a later date. It is a characteristic of stained and painted wood finishes to age over time when exposed to smoke, sunlight or general household cleaning chemicals.

Graining differences, mineral streaks, and wood color variations are expected in wood cabinetry and are not classified as defects. A newly installed kitchen could have these minor color variations.

Craft33 offers different types of finishes on cabinetry. Painted finishes are exceedingly different from the standard stained finish. Since normal movement is typical in wood products, certain climatic conditions can cause finish breaks, recesses, and joint and panel lines. Joint separation can be more visible on mitered doors. Consequently, in places and environments of extremely high or extremely low humidity, painted finishes are not recommended. Joint lines and variations are common attributes of painted finishes and will not be considered sufficient reasons for product replacement.

NOTE: Independent testing has shown that discoloration will develop on doors, drawers, and cabinet parts after continued exposure to tobacco smoke. This is remarkably apparent on white and lighter finishes. We do not warrant discoloration in our products due to exposure to smoke.

## Joint Lines

Expansion and contraction in doors and face frames can cause visible lines at the joints. The finish will still protect the surface and the structural integrity of the joint will not be affected. An open joint line is not considered a defect.

## I. Description of Warranty

This warranty applies only to the original consumer purchaser for one year from obtaining the product and is not transferable. Craft33 Original warrants all of its Craft33 Original cabinetry with a 3 Year Limited Warranty. In addition, all drawers, shelves, roll out trays, and any mechanical components will be free from material defects and workmanship. In the event that any Craft33 Original product fails during the course of normal use, Craft33 Original will either repair or replace the defective product at its own discretion and as determined solely by Craft33 Original.

## II. Intended Use of Product

To be covered by this warranty, the product must only be used for its intended purpose(s). Cabinets that have been improperly stored, installed, misused, modified, abused, mishandled, and/or subject to excessive moisture or extreme temperatures are not covered under this warranty. Any expenses involved in the shipping, removal, installation, or consequent damage of the defective product is not covered under this warranty. This warranty does not apply to products installed in mobile homes or recreational vehicles.

## III. Anticipated Variance in Product

The Craft33 Original warranty only applies to product defects and does not apply to properties of natural wood that are subjective in natural wood species. Any time you have a natural wood product, occurrences such as pinholes, knots, and variance in color or grain must be anticipated and, therefore, are not covered under this warranty. Prolonged exposure to light, heat, or aging may cause a change in color. Any event caused by environmental or chemical effects to the product are not covered under this warranty.

The properties of natural wood are such that it can react to climatic or humidity changes found within most homes. As much as half of the weight of freshly cut wood is water. Craft33 Original doors and face frames are manufactured from solid wood that has been carefully kiln-dried, retaining just enough moisture for proper construction and finishing. The center panels of some of the Craft33 Original doors are wood and some are medium density fiberboard. As a product of nature, solid hardwoods continue to react to their surroundings long after manufacture. When wood cabinet doors are in a warm, moist environment (high relative humidity), the wood expands. In a dry, colder environment (low relative humidity), the wood will contract. Expansion and contraction can be controlled but never eliminated even with humidity regulation.

Door panels are prone to minor expansion and contraction as seasonal temperature and humidity changes occur in a home. The contraction or shrinkage of the center door panel during low humidity periods may result in the appearance of an unfinished line along the edge of the center panel. Craft33 Original does not consider the appearance of an unfinished line as a product defect and will not replace doors due to this situation. It is recommended that a humidity control system is incorporated in a home to reduce the possibility of expansion and contraction in wood products. Touch-up markers are made available for purchase through your authorized Craft33 Original dealer to cover this edge line. Often times, touch-up may only be necessary within the first year.

All of the doors for Craft33 Original cabinetry are manufactured in moisture-controlled environments under precise tolerances. Although slight door warpage can be common in one or two doors within a newly installed kitchen, any door that has not hung through a complete heating and cooling cycle has the possibility of warping. Slight warpage can be eliminated through adjustments in the adjustable hinges. Any warpage that exceeds the capability of adjustments to the hinges should be further examined by removing the door from the cabinet and placing it on a flat surface. Hinge spacers are also available in cases where the warpage cannot be eliminated through hinge adjustments. Hinge spacers are available through your authorized Craft33 Original dealer. If the warpage cannot be eliminated through hinge adjustments or the use of hinge spacers and only if the doors have hung through a complete heating and cooling cycle and all of the cabinets are true and plumb, will Craft33 Original consider replacement.

Normal movement is typical on wood products, certain climatic conditions can cause finish breaks, recesses, and joint and panel lines. An open joint line is not considered a defect and is not covered under this warranty. Proper humidification of homes in extremely dry environments is strongly recommended.

Discoloration will develop on doors, drawers, and cabinet parts after continued exposure to tobacco smoke. This is remarkably apparent on lighter finishes. We do not warrant discoloration in our products due to exposure to smoke of any kind.

# WARRANTY

---

## IV. Product Repair or Replacement

Throughout the duration of the warranty period, Craft33 Original's sole obligation is to repair or replace any defective product for no charge at the discretion of Craft33 Original. This warranty only applies to cabinets and affiliated products sold by Craft33 Original, offered through an authorized Craft33 Original dealer. In the event that a claim is filed after the original product has been discontinued or canceled, Craft33 Original will honor the warranty, at their discretion, subject to the availability of the product, by either:

- Repairing or replacing the defective product with a new product of the same style.
- Repairing or replacing the defective product with a product of equal value and complementary style in order to maintain the appearance of the original cabinetry purchase.

An exact match between the finish of the original purchased product and the replacement or repaired product is not guaranteed.

## V. Rights of Consumer

There are no other warranties, disclosed or indicated, associated with this product. This document serves as a description of the consumer's definitive legal rights within the transaction and is the exclusive warranty for Craft33 Original. The exclusion or partial limitation of contingent or substantial damages is not permissible in some states. The consumer may also have further rights from state-to-state which are not cited in this warranty.

## VI. Submission of a Claim

All claims must be submitted to the authorized Craft33 Original dealer where the cabinets were originally purchased. Claims are to be submitted in writing. Every claim must include a dated copy of the original sales receipt as a proof of purchase as well as pictures of the product defect(s). A product return will be requested by the Craft33 Original claims department, we will provide return instructions.



Explore our HVAC equipment  
& accessories at [breeze33.com](https://www.breeze33.com)

**MINI SPLITS • SEER2 KITS • AIR CONDITIONERS  
PTACS • INDOOR AIR QUALITY • ACCESSORIES**





Explore our plumbing solutions, fixtures & accessories at [stream33.com](https://stream33.com)



**BATH • KITCHEN • PEX  
HYDRONICS • PARTS & SUPPLIES**

**FIND  
YOUR  
STYLE**

*Online*

at [craft33products.com](https://craft33products.com)



### **ORIGINAL COLLECTION**

The Original Collection features all-wood construction in five distinct styles with upgrade options including soft close for both drawers and doors.



### **DESIGNER COLLECTION**

The Designer Collection boasts unique touches and superb craftsmanship with eight premium full overlay door styles with included features of soft close and full extension drawers.



### **ESSENTIAL COLLECTION**

The Essential Collection combines timeless design and a touch of luxury with full access cabinetry and overlay styling, made from commercial grade furniture board. Craft33 Essential Collection is a truckload program only.

## 5 REGIONAL DISTRIBUTION CENTERS

**Columbus RDC** | 25  
614-643-2377  
711 Distribution Dr.  
Columbus, OH 43228  
After Hours: 614-582-7832

**Maple Heights RDC** | 23  
440-251-4755  
5700 Lee Rd S.  
Maple Heights, OH 44137  
After Hours: 440-251-4755

**Sebring RDC** | 29  
330-938-6350  
350 Courtney Rd.  
Sebring, OH 44672  
After Hours: 330-803-3492

**Toledo RDC** | 83  
419-470-6590  
4500 N Detroit Ave.  
Toledo, OH 43612  
After Hours: 419-764-5578

**Youngwood RDC** | 24  
724-404-4021  
72 E. Hillis St.  
Youngwood, PA 15697  
After Hours: 724-221-0149

## 36 BRANCHES | 8 KITCHEN, BATH, WINDOW & DOOR SHOWROOMS | 17 CLASSROOMS

**Akron** | 4  
234-352-1166  
166 N. Union St.  
Akron, OH 44304  
After Hours: 330-697-1085

**Columbus East** | 19 ☺  
614-294-3500  
1356 Cleveland Ave.  
Columbus, OH 43211  
After Hours: 614-582-7832

**Mansfield** | 7 ☺  
419-524-0411  
83 Smith Ave.  
Mansfield, OH 44905  
After Hours: 419-571-9953

**Sebring** | 29 ☺  
330-938-6350  
350 Courtney Rd.  
Sebring, OH 44672  
After Hours: 330-803-3492

**Ashtabula** | 13  
440-992-2116  
4625 Foster Ave.  
Ashtabula, OH 44004  
After Hours: 440-228-3603

**Columbus West** | 35 ☺  
614-503-0875  
4300 Roberts Rd.  
Columbus, OH 43228  
After Hours: 614-582-7832

**Medina** | 122 ☺  
*Coming Soon*  
234-378-9505  
160 Commerce Dr.  
Medina, OH 44256

**Steubenville** | 3 ☺ ☺  
740-282-0951  
934 W. Adams St.  
Steubenville, OH 43952  
After Hours: 304-914-1689

**Bedford Heights** | 14 ☺  
216-285-2900  
26200 Richmond Rd.  
Bedford Heights, OH 44146  
After Hours: 330-219-7749

**Dayton** | 84 ☺  
937-242-6980  
1054 Gateway Dr.  
Dayton, Ohio 45404  
After Hours: 614-314-9563

**Melwood** | 44  
412-622-8100  
434 Melwood Ave.  
Pittsburgh, PA 15213  
After Hours: 412-310-8228

**Toledo** | 15 ☺ ☺  
419-478-0343  
220 Matzinger Rd.  
Toledo, OH 43612  
After Hours: 419-392-2669

**Bethel Park** | 46  
412-835-8043  
3131 Industrial Blvd.  
Bethel Park, PA 15102  
After Hours: 412-310-8228

**Dubois** | 128  
*Coming Soon*  
814-217-0050  
302 Aspen Way  
Dubois, PA 15801

**Mentor** | 120 ☺  
440-391-5000  
7300 Industrial Park Blvd.  
Mentor, OH 44060  
After Hours: 440-479-3553

**Uniontown** | 8 ☺  
724-437-9806  
85 Pittsburgh St.  
Uniontown, PA 15401  
After Hours: 724-880-5131

**Brooklyn** | 123  
216-293-7798  
8550 Brookpark Rd.  
Brooklyn OH 44129  
After Hours: 216-570-8974

**Erie** | 39 ☺  
814-314-1516  
3003 Pittsburgh Ave.  
Erie, PA 16508  
After Hours: 814-243-5141

**Mount Vernon** | 85  
740-263-4313  
330 Commerce Drive  
Mount Vernon, OH 43050  
After Hours: 567-241-8073

**Warren** | 5  
330-369-2563  
2436 Niles Rd. SE  
Warren, OH 44484  
After Hours: 330-509-9437

**Byesville** | 18 ☺ ☺  
740-421-4758  
354 West Main  
Byesville, OH 43723  
After Hours: 740-398-8653

**Fremont** | 11  
419-332-2636  
641 South Front St.  
Fremont, OH 43420  
After Hours: 419-455-5996

**New Kensington** | 45  
724-335-8343  
419 Hileman Dr.  
New Kensington, PA 15068  
After Hours: 412-780-6461

**Washington** | 16 ☺  
724-225-8330  
1110 W Chestnut St.  
Washington, PA 15301  
After Hours: 330-604-7372

**Canton** | 12  
330-456-4508  
1215 McKinley Ave. SW  
Canton, OH 44707  
After Hours: 330-933-5598

**Jamestown** | 133  
*Coming Soon*  
716-815-6450  
2148 Allen St.  
Falconer, NY 14733

**Newark** | 9 ☺  
740-345-9617  
25 South 11th St.  
Newark, OH 43055  
After Hours: 740-219-9623

**Wheeling** | 6 ☺ ☺  
304-232-3310  
2300 Market St.  
Wheeling, WV 26003  
After Hours: 304-830-1324

**Cleveland East** | 20 ☺  
216-881-5700  
6420 Woodland Ave.  
Cleveland, OH 44104  
After Hours: 216-570-8974

**Johnstown** | 126  
*Coming Soon*  
814-304-1776  
330 Walnut St.  
Johnstown, PA 15091

**North Hills** | 47  
412-366-3143  
331 Rochester Rd.  
Pittsburgh, PA 15237  
After Hours: 412-522-8970

**Youngstown** | 38 ☺  
234-706-3525  
886 E. Midlothian Blvd.  
Youngstown, OH 44502  
After Hours: 330-301-1040

**Cleveland West** | 21  
216-529-1010  
11200 Madison Ave.  
Cleveland, OH 44102  
After Hours: 216-570-8974

**Lorain** | 2  
440-245-6874  
125 East 20th St.  
Lorain, OH 44052  
After Hours: 440-654-3974

**Sandusky** | 10  
419-625-5354  
1341 Olds St.  
Sandusky, OH 44870  
After Hours: 419-656-0566

**Youngwood** | 24 ☺  
724-404-4021  
72 E. Hillis St.  
Youngwood, PA 15697  
After Hours: 724-221-0149

### Customer Support Center ☺

800-362-9532 | Mon-Fri 6:30 AM-4:30 PM

### Jay Blaushild Training & Education Center ☺

*Coming Soon* - OPENING EARLY 2026